

## Recombinant Human UBE3A protein

Cat. No. UBE3A-1261H Lot. No. (See product label)

### SPECIFICATION

**Product Overview** Recombinant Human UBE3A protein was expressed in E. coli.

**Species** Human

**Source** E.coli

**Form** 20 mM Tris, 150 mM NaCl, 2 mM βME, 10% Glycerol

**Purity** ~90% by SDS-PAGE

**Storage** This product is stable at ≤ -70°C for up to 6 months from the date of receipt.  
For optimal storage, aliquot into smaller quantities after centrifugation and store at recommended temperature.

### GENE INFORMATION

**Gene Name** UBE3A ubiquitin protein ligase E3A [ Homo sapiens ]

**Official Symbol** UBE3A

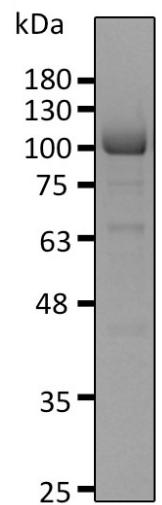
**Synonyms** UBE3A; ubiquitin protein ligase E3A; EPVE6AP, HPVE6A, human papilloma virus E6 associated protein; ubiquitin-protein ligase E3A; ANCR; Angelman syndrome; AS; E6 AP; FLJ26981; CTCL tumor antigen se37-2; E6AP ubiquitin-protein ligase; renal carcinoma antigen NY-REN-54; human papillomavirus E6-associated protein; oncogenic protein-associated protein E6-AP; human papilloma virus E6-associated

 Tel: 1-631-559-9269 1-516-512-3133

 Email: [info@creative-biomart.com](mailto:info@creative-biomart.com)  Fax: 1-631-938-8127

 45-1 Ramsey Road, Shirley, NY 11967, USA

protein; E6-AP; HPVE6A; EPVE6AP;

**Gene ID** 7337**mRNA Refseq** NM\_000462**Protein Refseq** NP\_000453**MIM** 601623**UniProt ID** Q05086**SDS-PAGE** Tel: 1-631-559-9269 1-516-512-3133 Email: [info@creative-biomart.com](mailto:info@creative-biomart.com)  Fax: 1-631-938-8127 45-1 Ramsey Road, Shirley, NY 11967, USA