

Recombinant Human UBE3A Protein, Myc/DDK-tagged, C13 and N15-labeled

Cat. No. UBE3A-2369H **Lot. No.** (See product label)

SPECIFICATION

Product Overview	UBE3A MS Standard C13 and N15-labeled recombinant protein (NP_570854) with a C-terminal MYC/DDK tag, was expressed in HEK293 cells.
Species	Human
Source	HEK293
Description	<p>This gene encodes an E3 ubiquitin-protein ligase, part of the ubiquitin protein degradation system. This imprinted gene is maternally expressed in brain and biallelically expressed in other tissues. Maternally inherited deletion of this gene causes Angelman Syndrome, characterized by severe motor and intellectual retardation, ataxia, hypotonia, epilepsy, absence of speech, and characteristic facies. The protein also interacts with the E6 protein of human papillomavirus types 16 and 18, resulting in ubiquitination and proteolysis of tumor protein p53. Alternative splicing of this gene results in three transcript variants encoding three isoforms with different N-termini. Additional transcript variants have been described, but their full length nature has not been determined.</p>
Molecular Mass	100.1 kDa
AA Sequence	<p>MATAACKRSGEPQSDDIEASRMKRAAAKHLIERYYHQLTEGCGNEACTNEFCASCPT FLRMDNNAAAIKALELYKINAKLCDPHPSKKGASSAYLENSKGAPNNSCSEIKMNKK GARIDFKDVTYLTEEKVYEILELCREREDYSPLIRVIGRVFSSAEALVQSFRKVKQHTK</p>

 Tel: 1-631-559-9269 1-516-512-3133

 Email: info@creative-biomart.com  Fax: 1-631-938-8127

 45-1 Ramsey Road, Shirley, NY 11967, USA

EELKSLQAKDEDEKDEDEKEKAACSAAMEEDSEASSSRIGDSSQGDNNLQKLGPD
 DVSVDIDAIRRVYTRLLSNEKIETAFLNALVYLSPNVECDLTYHNVYSRDPNYLNLFIIV
 MENRNLHSPEYLEMALPLFCKAMSKLPLAAQGKLIRLWSKYNADQIRMMETFQQLI
 TYKVISNEFNRSRNLVNDDDAIVAASKCLKMVYYANVVGGEVDTNHNEEDDEEPIPES
 SELTLQELLGEERRNKKGPRVDPLETELGVKTLDCRKPLIPFEFINEPLNEVLEMDK
 DYTFFKVETENKFSFMTCPFILNAVTKNLGLYYDNRIRMYSERRITVLYSLVQGGQLN
 PYRLKVRRDHIIDDALVRLEMIAMENPADLKKQLYVEFEQEGVDEGGVSKEFFQL
 VVEEIFNPDIGMFTYDESTKLFWFNPSSFETEGQFTLIGIVLGLAIYNNCILDVHFPMV
 VYRKLKMGKGTFRDLGDSHPVLYQSLKDLLEYEGNVEDDMMITFQISQTDLFGNPM
 MYDLKENGDKIPITNENRKEFVNLYSDYILNKSVEKQFKAFRRGFHMVTNESPLKYLF
 RPEEIELLICGSRNLDFQALEETTEYDGGYTRDSVLIREFWEIVHSFTDEQKRLFLQF
 TTGTDRAPVGGLGKMKMIIAKNGPDTERLPTSHTCFNLLLLPEYSSKEKLLKERLLKAIT
 YAKGFGMLTRTRPLEQKLISEEDLAANDILDYKDDDDKV

Purity > 80% as determined by SDS-PAGE and Coomassie blue staining

Stability Stable for 3 months from receipt of products under proper storage and handling conditions.

Storage Store at -80 centigrade. Avoid repeated freeze-thaw cycles.

Concentration 50 µg/mL as determined by BCA

Storage Buffer 100 mM glycine, 25 mM Tris-HCl, pH 7.3.

GENE INFORMATION

Gene Name UBE3A ubiquitin protein ligase E3A [Homo sapiens (human)]

Official Symbol UBE3A

 Tel: 1-631-559-9269 1-516-512-3133

 Email: info@creative-biomart.com  Fax: 1-631-938-8127

 45-1 Ramsey Road, Shirley, NY 11967, USA

Synonyms

UBE3A; ubiquitin protein ligase E3A; EPVE6AP, HPVE6A, human papilloma virus E6 associated protein; ubiquitin-protein ligase E3A; ANCR; Angelman syndrome; AS; E6 AP; FLJ26981; CTCL tumor antigen se37-2; E6AP ubiquitin-protein ligase; renal carcinoma antigen NY-REN-54; human papillomavirus E6-associated protein; oncogenic protein-associated protein E6-AP; human papilloma virus E6-associated protein; E6-AP; HPVE6A; EPVE6AP;

Gene ID

7337

mRNA Refseq

NM_130839

Protein Refseq

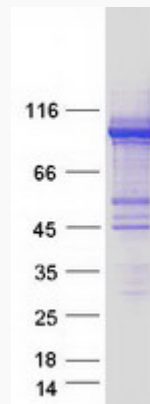
NP_570854

MIM

601623

UniProt ID

Q05086

SDS-PAGE


 Tel: 1-631-559-9269 1-516-512-3133

 Email: info@creative-biomart.com  Fax: 1-631-938-8127

 45-1 Ramsey Road, Shirley, NY 11967, USA