

Recombinant Human UBE3A Protein, C-His tagged (Isoform I)

Cat. No. UBE3A-35H Lot. No. (See product label)

SPECIFICATION

Product Overview	Recombinant Human UBE3A Protein (Isoform I) with C-His tag was expressed in HEK293.
Species	Human
Source	HEK293
Description	<p>This gene encodes an E3 ubiquitin-protein ligase, part of the ubiquitin protein degradation system. This imprinted gene is maternally expressed in brain and biallelically expressed in other tissues. Maternally inherited deletion of this gene causes Angelman Syndrome, characterized by severe motor and intellectual retardation, ataxia, hypotonia, epilepsy, absence of speech, and characteristic facies. The protein also interacts with the E6 protein of human papillomavirus types 16 and 18, resulting in ubiquitination and proteolysis of tumor protein p53. Alternative splicing of this gene results in three transcript variants encoding three isoforms with different N-termini. Additional transcript variants have been described, but their full length nature has not been determined.</p>
Molecular Mass	99 kDa
AA Sequence	<p>MKRAAAKHLIERYHQLTEGCGNEACTNEFCASCPTFLRMDNNAAAIKALELYKINA KLCDPHPSKKGASSAYLENSKGAPNNSCSEIKMNKKGARIDFKDVTYLTEEKVYEILE LCREREDYSPLIRVIGRVFSSAEALVQSFRKVKQHTKEELKSLQAKDEDEKDEDEKEK AACSAAMEEDSEASSSRIGDSSQGDNNLQKLGPDVSVSDIDAIRRVYTRLLSNEKI</p>

 Tel: 1-631-559-9269 1-516-512-3133

 Email: info@creative-biomart.com  Fax: 1-631-938-8127

 45-1 Ramsey Road, Shirley, NY 11967, USA

ETAFLNALVYLSPNVECDLTYHNVYSRDPNYLNLFIIVMENRNLHSPEYLEMALPLFC
 KAMSKLPLAAQGLRLWSKYNADQIRMMETFQQLITYKVISNEFNRSRNLVNDDDAI
 VAASKCLKMVYYANVVGGEVDTNHNEEDDEEPIPESELTLQELLGEERRNKKGPR
 VDPLETELGVKTLDCRKPLIPFEEFINEPLNEVLEMDKDYTFKFKVETENKFSFMTCPFI
 LNAVTKNLGLYYDNRIRMYSEERRITVLYSLVQGGQLNPYLRLKVRRDHIIDDALVRLE
 MIAMENPADLKKQLYVEFEGEQGVDEGGVSKEFFQLVVEEIFNPDIGMFTYDESTKL
 FWFNPSSFETEGQFTLIGIVLGLAIYNNCILDVHFPMVVYRKLGMGKGTFRDLGDSHP
 VLYQSLKDLLEYEGNVEDDMMITFQISQTDLFGNPMMYDLKENGDKIPITNENRKEF
 VNLYSDYILNKSVEKQFKAFRRGFHMVTNESPLKYLFRPEEIELLICGSRNLDFQALE
 ETTEYDGGYTRDSVLIREFWEIVHSFTDEQKRLFLQFTTGDRAPVGGGLGKLMIIAK
 NGPDTERLPTSHTCFNVLLLPEYSSKEKLERLLKAITYAKGFGMLHHHHHHHH

Purity > 90% by SDS-PAGE

Storage Store it under sterile conditions at -20 to -80 centigrade. It is recommended that the protein be aliquoted for optimal storage. Avoid repeated freeze-thaw cycles.

Concentration 0.57 mg/mL by BCA

Storage Buffer PBS, pH7.4

GENE INFORMATION

Gene Name UBE3A ubiquitin protein ligase E3A [Homo sapiens (human)]

Official Symbol UBE3A

Synonyms UBE3A; ubiquitin protein ligase E3A; AS; ANCR; PIX1; E6-AP; HPVE6A; EPVE6AP; ubiquitin-protein ligase E3A; CTCL tumor antigen se37-2; E6AP ubiquitin-protein ligase; HECT-type ubiquitin transferase E3A; human papilloma virus E6-associated protein; human papillomavirus E6-associated protein; oncogenic protein-associated

 Tel: 1-631-559-9269 1-516-512-3133

 Email: info@creative-biomart.com  Fax: 1-631-938-8127

 45-1 Ramsey Road, Shirley, NY 11967, USA

protein E6-AP; renal carcinoma antigen NY-REN-54; EC 2.3.2.26

Gene ID [7337](#)

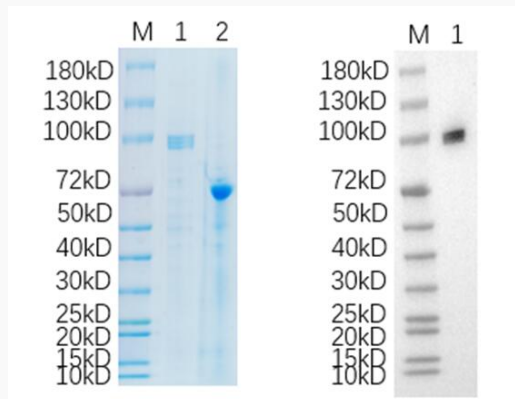
mRNA Refseq [NM_000462](#)

Protein Refseq [NP_000453](#)

MIM [601623](#)

UniProt ID [Q05086](#)

**Reducing 12% SDS-
PAGE and WB
analysis profile of
purified UBE3A**



1. UBE3A
2. BSA

 Tel: 1-631-559-9269 1-516-512-3133

 Email: info@creative-biomart.com  Fax: 1-631-938-8127

 45-1 Ramsey Road, Shirley, NY 11967, USA