

# Recombinant Full Length Human UBE3A Protein, C-Flag-tagged

**Cat. No.** UBE3A-505HFL    **Lot. No.** (See product label)

## SPECIFICATION

<b>Product Overview</b>	Recombinant Full Length Human UBE3A Protein, fused to Flag-tag at C-terminus, was expressed in Mammalian cells.
<b>Species</b>	Human
<b>Source</b>	Mammalian Cells
<b>Description</b>	<p>This gene encodes an E3 ubiquitin-protein ligase, part of the ubiquitin protein degradation system. This imprinted gene is maternally expressed in brain and biallelically expressed in other tissues. Maternally inherited deletion of this gene causes Angelman Syndrome, characterized by severe motor and intellectual retardation, ataxia, hypotonia, epilepsy, absence of speech, and characteristic facies. The protein also interacts with the E6 protein of human papillomavirus types 16 and 18, resulting in ubiquitination and proteolysis of tumor protein p53. Alternative splicing of this gene results in three transcript variants encoding three isoforms with different N-termini. Additional transcript variants have been described, but their full length nature has not been determined.</p>
<b>Form</b>	25 mM Tris HCl, pH 7.3, 100 mM glycine, 10% glycerol.
<b>Molecular Mass</b>	100.5 kDa
<b>AA Sequence</b>	MEKLNHCYWKSGEPQSDDIEASRMKRAAAKHLIERYYHQLTEGCGNEACTNEFCA SCPTFLRMDNNAAAI KALELYKINAKLCDPHPSKKGASSAYLENSKGGAPNNSCSEIK

 Tel: 1-631-559-9269    1-516-512-3133

 Email: [info@creative-biomart.com](mailto:info@creative-biomart.com)     Fax: 1-631-938-8127

 45-1 Ramsey Road, Shirley, NY 11967, USA

MNKKGARIDFKDVTYLTEEKVYEILELC REREDYSPLIRVIGRVFSSAEALVQSFRKV  
 KQHTKEELKSLQAKDEDKDEDEKEKAACSAAMEEDSEAS SSRIGDSSQGDNNLQ  
 KLGPDVSVSDIDAIRRVYTRLLSNEKIETAFLNALVYLSPNVECDLTYHNVYSRD PNY  
 LNLFIIVMENRNLHSPEYLEMALPLFCKAMSKLPLAAQGLRLWWSKYNADQIRRMME  
 TFQQLITYK VISNEFNSRNLVNDDDAIVAASKCLKMVYYANVVGGEVDTNHNEEDE  
 EPIPESELTLQELLGEERRNK KGPRVDPLETELGVKTLDCRKPLIPFEFINEPLNE  
 VLEMDKDYTFKVVETENKFSFMTCPFILNAVTKN LGLYYDNRIRMYSEERRITVLYSLV  
 QGQQLNPYLRLKVRDDHIIDALVRLEMIAMENPADLKKQLYVEFE GEQGVDEGGV  
 SKEFFQLVVEEIFNPDIGMFTYDESTKLFWFNPSSFETEGQFTLIGIVLGLAIYNNCILD  
 VHFPMVVYRKLKMGKGTFRDLGDSHPVLYQSLKDLLEYEGNVEDDMMITFQISQTD  
 LFGNPMYDLKENG DKIPITNENRKEFVNLYSDYILNKSVEKQFKAFRRGFHMTNE  
 SPLKYLFRPEEIELLICGSRNLDLDFQAL EETTEYDGGYTRDSVLIREFWEIVHSFTDEQ  
 KRLFLQFTTGTDRAPVGGGLGKLMIIAKNGPDTERLPTS  
 HTCENVLLLPEYSSKEKLERLLKAITYAKGFGMLTRTRPLEQKLISEEDLAANDILDY  
 KDDDDKV

**Purity** > 80% as determined by SDS-PAGE and Coomassie blue staining.

**Stability** Stable for 12 months from the date of receipt of the product under proper storage and handling conditions. Avoid repeated freeze-thaw cycles.

**Storage** Store at -80 centigrade.

**Concentration** >50 ug/mL as determined by microplate BCA method.

**Preparation** Recombinant protein was captured through anti-DDK affinity column followed by conventional chromatography steps.

**Protein Families** Druggable Genome

 Tel: 1-631-559-9269 1-516-512-3133

 Email: [info@creative-biomart.com](mailto:info@creative-biomart.com)  Fax: 1-631-938-8127

 45-1 Ramsey Road, Shirley, NY 11967, USA

<b>Protein Pathways</b>	Ubiquitin mediated proteolysis
-------------------------	--------------------------------

<b>Full Length</b>	Full L.
--------------------	---------

## GENE INFORMATION

<b>Gene Name</b>	UBE3A ubiquitin protein ligase E3A [ Homo sapiens (human) ]
------------------	---

<b>Official Symbol</b>	UBE3A
------------------------	-------

<b>Synonyms</b>	AS; ANCR; PIX1; E6-AP; HPVE6A; EPVE6AP
-----------------	--

<b>Gene ID</b>	7337
----------------	------

<b>mRNA Refseq</b>	NM_000462.5
--------------------	-------------

<b>Protein Refseq</b>	NP_000453.2
-----------------------	-------------

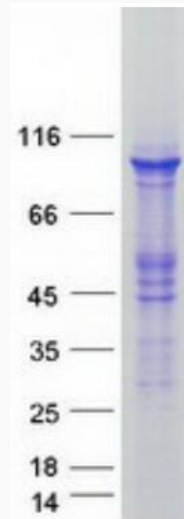
<b>MIM</b>	601623
------------	--------

<b>UniProt ID</b>	Q05086
-------------------	--------

 Tel: 1-631-559-9269 1-516-512-3133

 Email: [info@creative-biomart.com](mailto:info@creative-biomart.com)  Fax: 1-631-938-8127

 45-1 Ramsey Road, Shirley, NY 11967, USA



Coomassie blue staining of purified UBE3A protein.

 Tel: 1-631-559-9269 1-516-512-3133

 Email: [info@creative-biomart.com](mailto:info@creative-biomart.com)  Fax: 1-631-938-8127

 45-1 Ramsey Road, Shirley, NY 11967, USA