

# Recombinant Human UBE3A Protein, Myc/DDK-tagged, C13 and N15-labeled

Cat. No. UBE3A-6461H Lot. No. (See product label)

## SPECIFICATION

<b>Product Overview</b>	UBE3A MS Standard C13 and N15-labeled recombinant protein (NP_000453) with a C-terminal MYC/DDK tag, was expressed in HEK293 cells.
<b>Species</b>	Human
<b>Source</b>	HEK293
<b>Description</b>	<p>This gene encodes an E3 ubiquitin-protein ligase, part of the ubiquitin protein degradation system. This imprinted gene is maternally expressed in brain and biallelically expressed in other tissues. Maternally inherited deletion of this gene causes Angelman Syndrome, characterized by severe motor and intellectual retardation, ataxia, hypotonia, epilepsy, absence of speech, and characteristic facies. The protein also interacts with the E6 protein of human papillomavirus types 16 and 18, resulting in ubiquitination and proteolysis of tumor protein p53. Alternative splicing of this gene results in three transcript variants encoding three isoforms with different N-termini. Additional transcript variants have been described, but their full length nature has not been determined.</p>
<b>Molecular Mass</b>	100.5 kDa
<b>AA Sequence</b>	<p>MEKLHQCYWKSQSGEPQSDDIEASRMKRAAAKHLIERYYHQLTEGCGNEACTNEFCA            SCPTFLRMDNNAAAIKALELYKINAKLCDPHPSKKGASSAYLENSKGAPNNSCSEIK            MNKKGARIDFKDVTYLTEEKVYEILELCREREDYSPLIRVIGRVFSSAEALVQSFRKV</p>

 Tel: 1-631-559-9269 1-516-512-3133

 Email: [info@creative-biomart.com](mailto:info@creative-biomart.com)  Fax: 1-631-938-8127

 45-1 Ramsey Road, Shirley, NY 11967, USA



KQHTKEELKSLQAKDEDEKDEDEKEKAACSAAMEEDSEASSSRIGDSSQGDNNLQ  
 KLGPDVSDIDAIRRVYTRLLSNEKIETAFNLALVYLSPNVECDLTYHNVYSRDPNY  
 LNFLIIVMENRNLHSPEYLEMALPLFCKAMSKLPLAAQGLIRLWSKYNADQIRRMME  
 TFQQLITYKVISNEFNLSRNLVNDDDAIVAASKCLKMVYYANVVGGEVDTNHNEEDDE  
 EPIPESELTLQELLGEERRNKKGPRVDPLETELGVKTLDCRKLIPFEFINEPLNEV  
 LEMDKDYTFKVVETENKFSFMTCPFILNAVTKNLGLYYDNRIRMYSSERRITVLYSLVQ  
 GQQLNPYLRLKVRDHIIDDALVRLEMIAMENPADLKKQLYVEFEGEQGVDEGGVSK  
 EFFQLVVEEIFNPDIGMFTYDESTKLFWFNPSSFETEGQFTLIGIVLGLAIYNNCILDVH  
 FPMVVYRKLGMGKGTFRDLGDSHPVLYQSLKDLLEYEGNVEDDMMITFQISQTDLF  
 GNPMMYDLKENGDKIPITNENRKEFVNLYSDYILNKSVEKQKFAFRRGFHMVTNESP  
 LKYLFRPEEIELLICGSRNLDFQALEETTEYDGGYTRDSVLIREFWEIVHSFTDEQKRL  
 FLQFTTGTDRAPVGGGLGKLMIIAKNGPDTERLPTSHTCFNVLLEPEYSSKEKLKERL  
 LKAITYAKGFGMLTRTRPLEQKLISEEDLAANDILDYKDDDDKV

<b>Purity</b>	> 80% as determined by SDS-PAGE and Coomassie blue staining
<b>Stability</b>	Stable for 3 months from receipt of products under proper storage and handling conditions.
<b>Storage</b>	Store at -80 centigrade. Avoid repeated freeze-thaw cycles.
<b>Concentration</b>	50 µg/mL as determined by BCA
<b>Storage Buffer</b>	100 mM glycine, 25 mM Tris-HCl, pH 7.3.

## GENE INFORMATION

<b>Gene Name</b>	UBE3A ubiquitin protein ligase E3A [ Homo sapiens (human) ]
<b>Official Symbol</b>	UBE3A

**Synonyms**

UBE3A; ubiquitin protein ligase E3A; EPVE6AP, HPVE6A, human papilloma virus E6 associated protein; ubiquitin-protein ligase E3A; ANCR; Angelman syndrome; AS; E6 AP; FLJ26981; CTCL tumor antigen se37-2; E6AP ubiquitin-protein ligase; renal carcinoma antigen NY-REN-54; human papillomavirus E6-associated protein; oncogenic protein-associated protein E6-AP; human papilloma virus E6-associated protein; E6-AP; HPVE6A; EPVE6AP;

**Gene ID**

7337

**mRNA Refseq**

NM\_000462

**Protein Refseq**

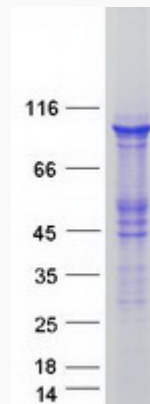
NP\_000453

**MIM**

601623

**UniProt ID**

Q05086

**SDS-PAGE**


 Tel: 1-631-559-9269 1-516-512-3133

 Email: [info@creative-biomart.com](mailto:info@creative-biomart.com)  Fax: 1-631-938-8127

 45-1 Ramsey Road, Shirley, NY 11967, USA