

# Recombinant Human UBE3A Protein (Met291-Leu407), N-His tagged

Cat. No. UBE3A-6535H Lot. No. (See product label)

## SPECIFICATION

<b>Product Overview</b>	Recombinant human UBE3A (Met291-Leu407) fused with the N-His tag was expressed in E. coli.
<b>Species</b>	Human
<b>Source</b>	E.coli
<b>ProteinLength</b>	Met291-Leu407
<b>Form</b>	Lyophilized powder/frozen liquid
<b>Molecular Mass</b>	15.75 kDa
<b>Purity</b>	> 90 % as determined by SDS-PAGE
<b>Notes</b>	For research use only.
<b>Storage</b>	Use a manual defrost freezer and avoid repeated freeze thaw cycles. Store at 2 to 8 centigrade for one week. Store at -20 to -80 centigrade for twelve months from the date of receipt.
<b>Storage Buffer</b>	0.01M PBS, pH 7.4, 0.02 % NLS
<b>Reconstitution</b>	Reconstitute in sterile water for a stock solution.

 Tel: 1-631-559-9269 1-516-512-3133

 Email: [info@creative-biomart.com](mailto:info@creative-biomart.com)  Fax: 1-631-938-8127

 45-1 Ramsey Road, Shirley, NY 11967, USA

**Shipping** They are shipped out with dry ice/blue ice unless customers require otherwise.

## GENE INFORMATION

**Gene Name** UBE3A ubiquitin protein ligase E3A [ Homo sapiens (human) ]

**Official Symbol** UBE3A

**Synonyms** UBE3A; ubiquitin protein ligase E3A; EPVE6AP, HPVE6A, human papilloma virus E6 associated protein; ubiquitin-protein ligase E3A; ANCR; Angelman syndrome; AS; E6 AP; FLJ26981; CTCL tumor antigen se37-2; E6AP ubiquitin-protein ligase; renal carcinoma antigen NY-REN-54; human papillomavirus E6-associated protein; oncogenic protein-associated protein E6-AP; human papilloma virus E6-associated protein; E6-AP; HPVE6A; EPVE6AP;

**Gene ID** 7337

**mRNA Refseq** NM\_000462

**Protein Refseq** NP\_000453

**MIM** 601623

**UniProt ID** Q05086

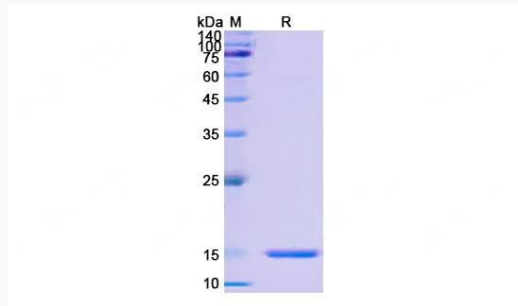
 Tel: 1-631-559-9269 1-516-512-3133

 Email: [info@creative-biomart.com](mailto:info@creative-biomart.com)  Fax: 1-631-938-8127

 45-1 Ramsey Road, Shirley, NY 11967, USA



SDS-PAGE



Tel: 1-631-559-9269 1-516-512-3133

Email: [info@creative-biomart.com](mailto:info@creative-biomart.com) Fax: 1-631-938-8127

45-1 Ramsey Road, Shirley, NY 11967, USA