

Recombinant Human UBE3C Protein (599-698), N-GST tagged

Cat. No. UBE3C-06H Lot. No. (See product label)

SPECIFICATION

Product Overview	Human UBE3C partial ORF (NP_055486, 599-698 a.a.) recombinant protein with GST-tag at N-terminal was expressed in Wheat Germ (in vitro).
Species	Human
Source	Wheat Germ
Protein Length	599-698
Description	Enables ubiquitin protein ligase activity. Involved in protein polyubiquitination. Predicted to be located in nucleus. Predicted to be part of proteasome complex.
Molecular Mass	36.74 kDa
AA Sequence	IQLFKVITNLVKMLKSRDTRRNFCPPNHWLSEQEDIKADKVTQLYVPASRHVWRFRR MGRIGPLQSTLDVGLSPPLSVSEERQLAVLTELPFVVPFEER
Applications	Enzyme-linked Immunoabsorbent Assay; Western Blot (Recombinant protein); Antibody Production; Protein Array
Notes	Best use within three months from the date of receipt of this protein.
Storage	Store at -80 centigrade. Aliquot to avoid repeated freezing and thawing.
Storage Buffer	50 mM Tris-HCl, 10 mM reduced Glutathione, pH 8.0 in the elution buffer.

 Tel: 1-631-559-9269 1-516-512-3133

 Email: info@creative-biomart.com  Fax: 1-631-938-8127

 45-1 Ramsey Road, Shirley, NY 11967, USA

GENE INFORMATION

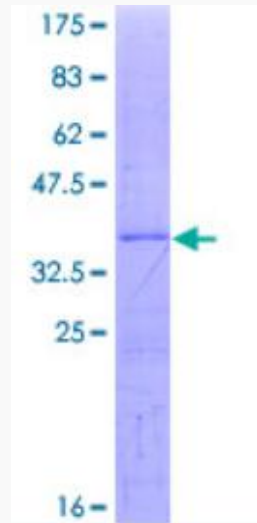
Gene Name	UBE3C ubiquitin protein ligase E3C [Homo sapiens (human)]
Official Symbol	UBE3C
Synonyms	UBE3C; ubiquitin protein ligase E3C; RAUL; HECTH2; NDSMBA; NEDSMBA; ubiquitin-protein ligase E3C; HECT-type ubiquitin transferase E3C; RTA-associated ubiquitin ligase; homologous to E6AP carboxyl terminus homologous protein 2; ubiquitin-protein isopeptide ligase (E3); EC 2.3.2.26
Gene ID	9690
mRNA Refseq	NM_014671
Protein Refseq	NP_055486
MIM	614454
UniProt ID	Q15386

 Tel: 1-631-559-9269 1-516-512-3133

 Email: info@creative-biomart.com  Fax: 1-631-938-8127

 45-1 Ramsey Road, Shirley, NY 11967, USA

**Quality Control
Testing**



12.5% SDS-PAGE Stained with Coomassie Blue.

 Tel: 1-631-559-9269 1-516-512-3133

 Email: info@creative-biomart.com  Fax: 1-631-938-8127

 45-1 Ramsey Road, Shirley, NY 11967, USA