

# Recombinant Full Length Human UBE3C Protein, C-Flag-tagged

**Cat. No.** UBE3C-1868HFL    **Lot. No.** (See product label)

## SPECIFICATION

<b>Product Overview</b>	Recombinant Full Length Human UBE3C Protein, fused to Flag-tag at C-terminus, was expressed in Mammalian cells.
<b>Species</b>	Human
<b>Source</b>	Mammalian Cells
<b>Description</b>	Enables ubiquitin protein ligase activity. Involved in protein polyubiquitination. Predicted to be located in nucleus. Predicted to be part of proteasome complex.
<b>Form</b>	25 mM Tris HCl, pH 7.3, 100 mM glycine, 10% glycerol.
<b>Molecular Mass</b>	123.7 kDa
<b>AA Sequence</b>	<p>MFSFEGDFKTRPKVSLGGASRKEEKASLLHRTQEERRKREEERRRLKNAIIIQSFIRG  YRDRKQQYSIQR SAFDRCATLSQSGGAFPIANGPNLTLVLRQLLFFYKQNEDESKRLI  WLYQNLIKHSSLFVKQLDGSERLTC LFIQIKRLMSLCCRLLQNCNDDSLNVALPMMR  LEVFSSSENTYLPVLQDASYVSVIEQILHYMIHNGYYRS LYLINSLKPSSIEYSDLSR  VPIAKILLENLKPLHFTYNSCPEGARQQVFTAFTEEFLAAPFTDQIFHF IIPALADAQT  VFPYEPFLNALLLIESRCSRKSGGAPWLFYFVLTVGENYLGALSEEGLLVYLRVLQTF  LS QLPVSPASASCHDSASDSEEESEEADKPSSPEDGRLSVSYITEECLKKLDTKQQ  TNTLLNLVWRDSASEE VFTTMASVCHTMLVQHRMMVPKVRLLYSLAFNARFLRHL  WFLISSMSTRMITGSMVPLLQVISRGSPMSF EDSSRIIPLFYLFSSLFSHSLISIHNE  FFGDPIEVVGQRQSSMMPFTLEELIMLSRCLRDACLGIKLA YPETKPEVREEYITAF</p>

 Tel: 1-631-559-9269    1-516-512-3133

 Email: [info@creative-biomart.com](mailto:info@creative-biomart.com)     Fax: 1-631-938-8127

 45-1 Ramsey Road, Shirley, NY 11967, USA

QSIGVTTSSSEMQQCIQMEQKRWIQLFKVITNLVKMLKSRDTRRNFCPPNHWLSE QE  
 DIKADKVTQLYVPASRHVWRFRMRGRIGPLQSTLDVGLSPPLSVSEERQLAVLTEL  
 PFVVPFEERVK IFQRLIYADKQEVQGDGPFLDGINVTIRRNYYEDAYDKLSPENEPD  
 LKKRIRVHLLNAHGLDEAGIDGG GIFREFLNELLKSGFNPNQGFFKTTNEGLLYPNP  
 AAQMLVGDSFARHYYFLGRMLGKALYENMLVELPFA GFFLSKLLGTSADVDIHHLA  
 SLDPEVYKNLLFLKSYEDDVEELGLNFTVVNNDLGEAQVELKFGGKDIP VTSANRI  
 AYIHLVADYRLNRQIRQHCLAFRQGLANVVSLEWLRMFDQQEIQVLISGAQVPISLED  
 LKSFT NYSGGYSADHPVIKVFWRVVEGFTDEEKRLLKFVTSCSRPPLLGFKELYPA  
 FCIHNGGSDLERLPTAST CMNLLKLPEFYDETLRSKLLYAIECAAGFELS TRTRPLE  
 QKLISEEDLAANDILDYKDDDDKV

<b>Purity</b>	> 80% as determined by SDS-PAGE and Coomassie blue staining.
<b>Stability</b>	Stable for 12 months from the date of receipt of the product under proper storage and handling conditions. Avoid repeated freeze-thaw cycles.
<b>Storage</b>	Store at -80 centigrade.
<b>Concentration</b>	>50 ug/mL as determined by microplate BCA method.
<b>Preparation</b>	Recombinant protein was captured through anti-DDK affinity column followed by conventional chromatography steps.
<b>Protein Families</b>	Druggable Genome
<b>Protein Pathways</b>	Ubiquitin mediated proteolysis
<b>Full Length</b>	Full L.

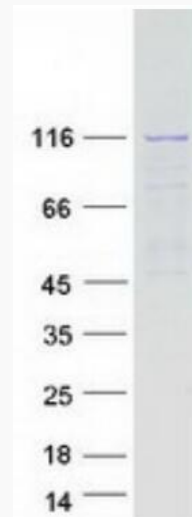
## GENE INFORMATION

 Tel: 1-631-559-9269 1-516-512-3133

 Email: [info@creative-biomart.com](mailto:info@creative-biomart.com)  Fax: 1-631-938-8127

 45-1 Ramsey Road, Shirley, NY 11967, USA

<b>Gene Name</b>	UBE3C ubiquitin protein ligase E3C [ Homo sapiens (human) ]
<b>Official Symbol</b>	UBE3C
<b>Synonyms</b>	RAUL; HECTH2
<b>Gene ID</b>	9690
<b>mRNA Refseq</b>	NM_014671.3
<b>Protein Refseq</b>	NP_055486.2
<b>MIM</b>	614454
<b>UniProt ID</b>	Q15386



Coomassie blue staining of purified UBE3C protein.

 Tel: 1-631-559-9269 1-516-512-3133

 Email: [info@creative-biomart.com](mailto:info@creative-biomart.com)  Fax: 1-631-938-8127

 45-1 Ramsey Road, Shirley, NY 11967, USA