

Recombinant Human UBE3C Protein, Myc/DDK-tagged, C13 and N15-labeled

Cat. No. UBE3C-2458H Lot. No. (See product label)

SPECIFICATION

Product Overview	UBE3C MS Standard C13 and N15-labeled recombinant protein (NP_055486) with a C-terminal MYC/DDK tag, was expressed in HEK293 cells.
Species	Human
Source	HEK293
Description	E3 ubiquitin-protein ligase that accepts ubiquitin from the E2 ubiquitin-conjugating enzyme UBE2D1 in the form of a thioester and then directly transfers the ubiquitin to targeted substrates. Can assemble unanchored poly-ubiquitin chains in either 'Lys-29'- or 'Lys-48'-linked polyubiquitin chains. Has preference for 'Lys-48' linkages. It can target itself for ubiquitination in vitro and may promote its own degradation in vivo.
Molecular Mass	123.7 kDa
AA Sequence	MFSFEGDFKTRPKVSLGGASRKEEKASLLHRTQEERRKREEERRRLKNAIIIQSFIRG YRDRKQQYSIQRSADFRCATLSQSGGAFPIANGPNLTLLVRQLLFFYKQNEFSKRLI WLYQNLIKHSSLFVKQLDGSERLTCLFQIKRLMSLCCRLLQNCNDDSLNVALPMMRL EVFSSENTYLPVLQDASYVVSVEIQILHYMIHNGYYRSLYLLINSKLPSSIEYSDLSRV PIAKILLENLKPLHFTYNSCPEGARQQVFTAFTEEFLAAPFTDQIFHFIIIPALADAQTV FPYEPFLNALLIESRCSRKSGGAPWLFYFVLTVGENYLGALSEEGLLVYLRVLQTFLL SQLPVSPASASCHDSASDSEEESEADKPSSPEDGRLSVSYITEECLKKLDTKQQTN TLLNLVWRDSASEEVFTTMASVCHTMLVQHRMMVPKVRLLYSLAFNARFLRHLWFL

 Tel: 1-631-559-9269 1-516-512-3133

 Email: info@creative-biomart.com  Fax: 1-631-938-8127

 45-1 Ramsey Road, Shirley, NY 11967, USA

ISSMSTRMITGSMVPLLQVISRGSPMSFEDSSRIIPLFYLFSSLFSHSLISIHDFEFGD
 PIEVVGQRQSSMMPFTLEELIMLSRCLRDACLGIKLAYPETKPEVREEYITAFQSIGV
 TTSSEMQQCIQMEQKRWIQLFKVITNLVKMLKSRDTRRNFCPPNHWLSEQEDIKAD
 KVTQLYVPASRHVWRFRRMGRIGPLQSTLDVGLSPPLSVSEERQLAVLTELFPVVP
 FEERVKIFQRLIYADKQEVQGDGPFLLDGINVTIRRNIIYEDAYDKLSPENEPDLKKRIR
 VHLLNAHGLDEAGIDGGGIFREFLNELLKSGFNPNQGFFKTTNEGLLYPNPAAQMLV
 GDSFARHYYFLGRMLGKALYENMLVELPFAGFFLSKLLGTSADVDIHHLASLDPEVY
 KNLLFLKSYEDDVEELGLNFTVVNNDLGEAQVVELKFGGKDIPVTSANRIAYIHLVAD
 YRLNRQIRQHCLAFRQGLANVVSLEWLRMFDQQEIQVLISGAQVPISLEDLKSFTNY
 SGGYSADHPVIKVFWRVVEGFTDEEKRLLKFKVTSCSRPPLLGFKELYPAFCIHNGG
 SDLERLPTASTCMNLLKLPEFYDETLRSKLLYAIECAAGFELSTRTRPLEQKLISEED
 LAANDILDYKDDDDKV

Purity > 80% as determined by SDS-PAGE and Coomassie blue staining

Stability Stable for 3 months from receipt of products under proper storage and handling conditions.

Storage Store at -80 centigrade. Avoid repeated freeze-thaw cycles.

Concentration 50 µg/mL as determined by BCA

Storage Buffer 100 mM glycine, 25 mM Tris-HCl, pH 7.3.

GENE INFORMATION

Gene Name UBE3C ubiquitin protein ligase E3C [Homo sapiens (human)]

Official Symbol UBE3C

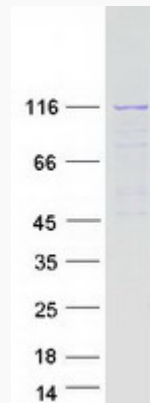
Synonyms UBE3C; ubiquitin protein ligase E3C; ubiquitin-protein ligase E3C; KIAA10; ubiquitin-

 Tel: 1-631-559-9269 1-516-512-3133

 Email: info@creative-biomart.com  Fax: 1-631-938-8127

 45-1 Ramsey Road, Shirley, NY 11967, USA

protein isopeptide ligase (E3); HECTH2; KIAA0010;

Gene ID 9690**mRNA Refseq** NM_014671**Protein Refseq** NP_055486**MIM** 614454**UniProt ID** Q15386**SDS-PAGE** Tel: 1-631-559-9269 1-516-512-3133 Email: info@creative-biomart.com  Fax: 1-631-938-8127 45-1 Ramsey Road, Shirley, NY 11967, USA