

# Recombinant Human UBE4A Protein, Myc/DDK-tagged, C13 and N15-labeled

Cat. No. UBE4A-6028H Lot. No. (See product label)

## SPECIFICATION

### Product Overview

UBE4A MS Standard C13 and N15-labeled recombinant protein (NP\_004779) with a C-terminal MYC/DDK tag, was expressed in HEK293 cells.

### Species

Human

### Source

HEK293

### Description

This gene encodes a member of the U-box ubiquitin ligase family. The encoded protein is involved in multiubiquitin chain assembly and plays a critical role in chromosome condensation and separation through the polyubiquitination of securin. Autoantibodies against the encoded protein may be markers for scleroderma and Crohn's disease. A pseudogene of this gene is located on the long arm of chromosome 3. Alternatively spliced transcript variants encoding multiple isoforms have been observed for this gene.

### Molecular Mass

123.3 kDa

### AA Sequence

MTDQENNNNISSNPFAALFGSLADAKQFAAIQKEQLKQQSDELPASPDDSDNSVSE  
SLDEFDYSVAEISRSFRSQQEICEQLNINHMIQRIFLITLDNSDPSLKSGNGIPSRVY  
LEEMAVELEDQDWLDMSNVEQALFARLLLQDPGNHLINMTSSTLNLNSADRDAGER  
HIFCYLYSCFQRAKEEITKVPENLLPFAVQCRNLTVSNTRTVLLTPEIYVDQNIHEQLV  
DLMLEAIQGAREYMNKIYFEDVTEFLEEVI EALILDEEVRTFPEVMIPVFDILLGRIKDL  
ELCQILLYAYLDILLYFTRQKDMAKVFVEYIQPKDPTNGQMYQKTL LGVILSISCLLKTP

 Tel: 1-631-559-9269 1-516-512-3133

 Email: [info@creative-biomart.com](mailto:info@creative-biomart.com)  Fax: 1-631-938-8127

 45-1 Ramsey Road, Shirley, NY 11967, USA

GVVENHGYFLNPSRSSPQEIKVQEANIHQFMAQFHEKIYQMLKNLLQLSPETKHCILS  
 WLGNCLHANAGRRTKIWANQMPEIFFQMYASDAFFLNLGAALLKLCQPFCKPRSSRL  
 LTFNPTYCALKELNDEERKIKNVHMRGLDKETCLIPAVQEPKFPQNYNLVTENLALTE  
 YTLYLGFHRLHDQMVKINQNLHRLQVAWRDAQSSSPAADNLREQFERLMTIYLST  
 KTAMTEPQMLQNCLNLQVSMALLVQLAIGNEGSQPIELTFPLPDGYSSLAYVPEFF  
 ADNLGDFLIFLRRFADDILETSADSLEHVLHFITIFTGSIERMKNPHLRKLAEVLEAVM  
 PHLDQTPNPLVSSVFHRKRVFCNFQYAPQLAEALIKVFDIEFTGDPHQFEQKFNYR  
 RPMYPILRYMWGTDITYRESIKDLADYASKNLEAMNPPLFLRFLNLLMNDIAIFLLDEAI  
 QYLSKIKIQQIEKDRGEWDSLTPPEARREKEAGLQMFGQLARFHNIMSNETIGTLAFLT  
 SEIKSLFVHPFLAERIISMLNYFLQHLVGPKMGALKVKDFSEDFKPPQLVSDICTIYL  
 NLGDEENFCATVPKDGRSYSPTLFAQTVRVLKKINKPGNMIMAFSNAERIKSLADL  
 QQQEEETYADACDEFDPIMSTLMCDPVVLPSSRVTVDRSTIARHLLSDQTDPFNRS  
 PLTMDQIRPNTELKEKIQRWLAERKQQKEQLETRTRPLEQKLISEEDLAANDILDYKD  
 DDDKV

**Purity** > 80% as determined by SDS-PAGE and Coomassie blue staining

**Stability** Stable for 3 months from receipt of products under proper storage and handling conditions.

**Storage** Store at -80 centigrade. Avoid repeated freeze-thaw cycles.

**Concentration** 50 µg/mL as determined by BCA

**Storage Buffer** 100 mM glycine, 25 mM Tris-HCl, pH 7.3.

## GENE INFORMATION

**Gene Name** UBE4A ubiquitination factor E4A [ Homo sapiens (human) ]

**Official Symbol** UBE4A

 Tel: 1-631-559-9269 1-516-512-3133

 Email: [info@creative-biomart.com](mailto:info@creative-biomart.com)  Fax: 1-631-938-8127

 45-1 Ramsey Road, Shirley, NY 11967, USA

**Synonyms** UBE4A; ubiquitination factor E4A; ubiquitination factor E4A (homologous to yeast UFD2), ubiquitination factor E4A (UFD2 homolog, yeast); ubiquitin conjugation factor E4 A; E4; KIAA0126; UBOX2; UFD2; ubiquitination factor E4A (UFD2 homolog, yeast); MGC133315;

**Gene ID** [9354](#)

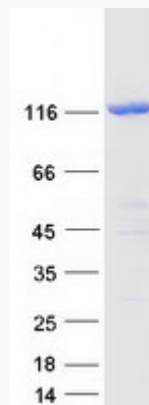
**mRNA Refseq** [NM\\_004788](#)

**Protein Refseq** [NP\\_004779](#)

**MIM** [603753](#)

**UniProt ID** [Q14139](#)

**SDS-PAGE**



 Tel: 1-631-559-9269 1-516-512-3133

 Email: [info@creative-biomart.com](mailto:info@creative-biomart.com)  Fax: 1-631-938-8127

 45-1 Ramsey Road, Shirley, NY 11967, USA