

Recombinant Human UBL5 Protein, Myc/DDK-tagged, C13 and N15-labeled

Cat. No. UBL5-6612H **Lot. No.** (See product label)

SPECIFICATION

Product Overview	UBL5 MS Standard C13 and N15-labeled recombinant protein (NP_001041706) with a C-terminal MYC/DDK tag, was expressed in HEK293 cells.
Species	Human
Source	HEK293
Description	<p>This gene encodes a member of a group of proteins similar to ubiquitin. The encoded protein is not thought to degrade proteins like ubiquitin but to affect their function through being bound to target proteins by an isopeptide bond. The gene product has been studied as a link to predisposition to obesity based on its expression in <i>Psammomys obesus</i>, the fat sand rat, which is an animal model for obesity studies. Variation in this gene was found to be significantly associated with some metabolic traits (PMID: 15331561) but not associated with childhood obesity (PMID: 19189687). Pseudogenes of this gene are located on chromosomes 3, 5 and 17. Multiple alternatively spliced variants, encoding the same protein, have been identified.</p>
Molecular Mass	8.5 kDa
AA Sequence	MIEVVCNDRLGKKVRVKCNTDDTIGDLKKLIAAQTGTRWINKIVLKKWYTIFKDHVSLG DYEIHDGMNLELYYQTRTRPLEQKLISEEDLAANDILDYKDDDDKV
Purity	> 80% as determined by SDS-PAGE and Coomassie blue staining

 Tel: 1-631-559-9269 1-516-512-3133

 Email: info@creative-biomart.com  Fax: 1-631-938-8127

 45-1 Ramsey Road, Shirley, NY 11967, USA

Stability	Stable for 3 months from receipt of products under proper storage and handling conditions.
Storage	Store at -80 centigrade. Avoid repeated freeze-thaw cycles.
Concentration	50 µg/mL as determined by BCA
Storage Buffer	100 mM glycine, 25 mM Tris-HCl, pH 7.3.

GENE INFORMATION

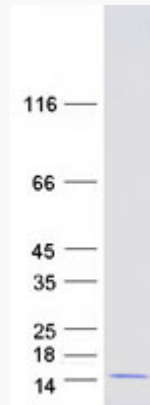
Gene Name	UBL5 ubiquitin-like 5 [Homo sapiens (human)]
Official Symbol	UBL5
Synonyms	UBL5; ubiquitin-like 5; ubiquitin-like protein 5; beacon; HUB1; FLJ46917; MGC131795;
Gene ID	59286
mRNA Refseq	NM_001048241
Protein Refseq	NP_001041706
MIM	606849
UniProt ID	Q9BZL1

 Tel: 1-631-559-9269 1-516-512-3133

 Email: info@creative-biomart.com  Fax: 1-631-938-8127

 45-1 Ramsey Road, Shirley, NY 11967, USA

SDS-PAGE



 Tel: 1-631-559-9269 1-516-512-3133

 Email: info@creative-biomart.com  Fax: 1-631-938-8127

 45-1 Ramsey Road, Shirley, NY 11967, USA