

Recombinant Human UBQLN1 Protein, His-tagged

Cat. No. UBQLN1-279H Lot. No. (See product label)

SPECIFICATION

Product Overview	Recombinant human Ubiquilin-1 protein (Ala2-Ser589) with a N-terminal 6x histidine tag derived from the transfected human HEK293 cells.
Species	Human
Source	HEK293
Form	Lyophilized powder
Molecular Mass	Recombinant mouse ubiquilin-1 has a calculated molecular mass of 65 kDa. Due to the abundant glycosylation, it migrates as approximately 75-80 kDa protein bands in SDS-PAGE under DTT, beta-mercaptoethanol reducing conditions.
Purity	> 90%, SDS-PAGE under reducing conditions and visualized by Coomassie blue staining
Usage	This product is furnished for LABORATORY RESEARCH USE ONLY. Not for diagnostic or therapeutic use.
Storage	Upon arrival, the protein may be stored for 2 weeks at 4 centigrade. For long term storage, it is recommended to store at -20 centigrade or -80 centigrade in appropriate aliquots. Avoid repeated freeze-thaw cycles.
Concentration	Determined by BCA protein assay kit (Thermo Scientific)

 Tel: 1-631-559-9269 1-516-512-3133

 Email: info@creative-biomart.com  Fax: 1-631-938-8127

 45-1 Ramsey Road, Shirley, NY 11967, USA

Storage Buffer Lyophilized from a 0.2 µm filtered solution in PBS

Reconstitution Briefly spin the vial and bring the contents to the bottom prior to opening. It is recommended to reconstitute at 0.5 - 1.0 mg/mL with sterile deionized water or 1x PBS.

GENE INFORMATION

Gene Name [UBQLN1 ubiquilin 1 \[Homo sapiens \(human\) \]](#)

Official Symbol [UBQLN1](#)

Synonyms Ubiquilin-1; Protein linking IAP with cytoskeleton 1; PLIC-1; hPLIC-1; DA41; DSK2; UBQN; XDRP1; Ubiquilin 1; PLIC1

Gene ID [29979](#)

mRNA Refseq [NM_013438](#)

Protein Refseq [NP_038466](#)

MIM [605046](#)

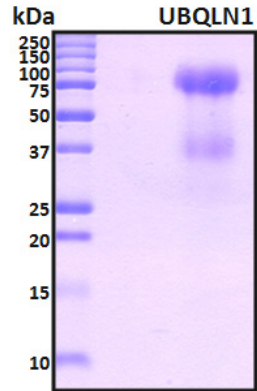
UniProt ID [Q9UMX0](#)

 Tel: 1-631-559-9269 1-516-512-3133

 Email: info@creative-biomart.com  Fax: 1-631-938-8127

 45-1 Ramsey Road, Shirley, NY 11967, USA

SDS-PAGE Image



 Tel: 1-631-559-9269 1-516-512-3133

 Email: info@creative-biomart.com  Fax: 1-631-938-8127

 45-1 Ramsey Road, Shirley, NY 11967, USA