

Active Recombinant Full Length Human Ubiquitin Carboxyl-Terminal Esterase L1 (ubiquitin thiolesterase), His-tagged

Cat. No. UCHL1-1637H Lot. No. (See product label)

SPECIFICATION

Product Overview	Recombinant full length human UCHL1 was expressed in E. coli cells using a N-terminal His tag.
Species	Human
Source	E.coli
ProteinLength	1-223 a.a.
Description	<p>UCHL1 is a member of the peptidase C12 family and a thiol protease that hydrolyzes a peptide bond at the C-terminal glycine of ubiquitin to generate the ubiquitin monomer. UCHL1 is expressed in the neurons and in cells of the diffuse neuroendocrine system. Mutations in UCHL1 may be associated with Parkinson disease. The ligase and hydrolase activities of UCHL1 may play roles in proteasomal protein degradation, a process critical for neuronal health. Inhibition of UCHL1 in mouse hippocampal slices reduces normal synaptic function and long-term potentiation. PKA-CREB pathway mediates the effects of UCHL1 on Amyloid-beta-induced synaptic dysfunction and Uchl1 also reversed the inhibition of CREB phosphorylation induced by Amyloid-beta.</p>
Applications	Western Blot
Molecular Weight	25 kDa

 Tel: 1-631-559-9269 1-516-512-3133

 Email: info@creative-biomart.com  Fax: 1-631-938-8127

 45-1 Ramsey Road, Shirley, NY 11967, USA

Expression System	E.coli
Form	Recombinant protein stored in 50mM sodium phosphate, pH 7.0, 300mM NaCl, 150 mM imidazole, 0.1 mM PMSF, 0.25 mM DTT, 25% glycerol.
Purity	>95%
Concentration	0.2ug/ul
Sequences	Full length
Storage	Store product at -70oC. For optimal storage, aliquot target into smaller quantities after centrifugation and store at recommended temperature. For most favorable performance, avoid repeated handling and multiple freeze/thaw cycles. Product shipped on dry ice.
Full Length	Full L.

GENE INFORMATION

Gene Name	UCHL1 ubiquitin carboxyl-terminal esterase L1 (ubiquitin thiolesterase) [Homo sapiens]
Official Symbol	UCHL1
Synonyms	UCHL1; PARK5; PGP9.5; Uch-L1; UCH-L1; EC 3.4.19.12; Neuron cytoplasmic protein 9.5; Ubiquitin thioesterase L1; ubiquitin C-terminal esterase L1; ubiquitin carboxyl-terminal esterase L1; ubiquitin thiolesterase L1; Ubiquitin carboxyl-terminal esterase L1 (ubiquitin thiolesterase); Ubiquitin carboxy-terminal hydrolase L1; Ubiquitin carboxy-terminal hydrolase L1 (UCH-L1); EC 3.1.2.15; ubiquitin thiolesterase; ubiquitin carboxy-terminal esterase; isopeptidase; isopeptidase T;

 Tel: 1-631-559-9269 1-516-512-3133

 Email: info@creative-biomart.com  Fax: 1-631-938-8127

 45-1 Ramsey Road, Shirley, NY 11967, USA

ubiquitin C-terminal hydrolase; ubiquitin carboxy-terminal hydrolase; ubiquitin-C-terminal-thiolester hydrolase; ubiquitin-C-terminal-thioester hydrolase; ubiquitin carboxyl-terminal hydrolase isozyme L1; OTTHUMP00000125219; OTTHUMP00000218137; OTTHUMP00000218139; OTTHUMP00000218140; OTTHUMP00000218141; ubiquitin thioesterase L1; neuron cytoplasmic protein 9.5; ubiquitin C-terminal hydrolase

Gene ID [7345](#)

mRNA Refseq [NM_004181](#)

Protein Refseq [NP_004172](#)

MIM [191342](#)

UniProt ID [P09936](#)

Chromosome Location 4p14

Pathway Neurodegenerative Disorders; Parkinson"s disease.

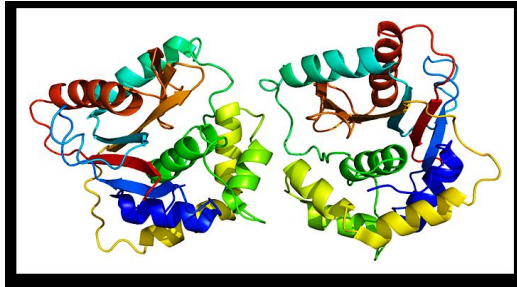
Function cysteine-type endopeptidase activity; ligase activity; omega peptidase activity; peptidase activity; protein binding; ubiquitin binding; ubiquitin thiolesterase activity.

 Tel: 1-631-559-9269 1-516-512-3133

 Email: info@creative-biomart.com  Fax: 1-631-938-8127

 45-1 Ramsey Road, Shirley, NY 11967, USA

PDBrendering based
on 2etl.



 Tel: 1-631-559-9269 1-516-512-3133

 Email: info@creative-biomart.com  Fax: 1-631-938-8127

 45-1 Ramsey Road, Shirley, NY 11967, USA