

Recombinant Human UCHL1 protein(1-220 aa), C-His-tagged

Cat. No. UCHL1-2878H Lot. No. (See product label)

SPECIFICATION

Product Overview	Recombinant Human UCHL1 protein(P09936)(1-220 aa), fused with C-terminal His tag, was expressed in E. coli.
Species	Human
Source	E.coli
ProteinLength	1-220 aa
Form	0.15 M Phosphate buffered saline
Molecular Mass	26 kDa
Storage	Shipped on dry ice. Avoid repeated freeze-thaw cycles. Upon receipt, 2 days when stored at 2 to 8 °C after thawing. Up to 12 months when aliquoted and stored at -20 to -80°C.
Reconstitution	It is recommended that sterile water be added to the vial to prepare a stock solution of 0.2 ug/ul. Centrifuge the vial at 4°C before opening to recover the entire contents.
AA Sequence	<p> MQLKPMEINPEMLNKVLSRLGVAGQWRFVDVLGLEEESLGSVPAPACALLLFLPLTA QHENFRKKQIEELKGQEVSPKVYFMKQTIGNSCGTIGLIHAVANNQDKLGFEDGSVL KQFLSETEKMSPEDRAKCFEKNEAIQAAHDAVAQEGQCRVDDKVNHFHILFNNVDG HLYELDGRMPFPVNHGASSEDLLKDAAKVCREFTEREQGEVRFSAVALC </p>

 Tel: 1-631-559-9269 1-516-512-3133

 Email: info@creative-biomart.com  Fax: 1-631-938-8127

 45-1 Ramsey Road, Shirley, NY 11967, USA

GENE INFORMATION

Gene Name UCHL1 ubiquitin carboxyl-terminal esterase L1 (ubiquitin thiolesterase) [Homo sapiens]

Official Symbol UCHL1

Synonyms UCHL1; ubiquitin carboxyl-terminal esterase L1 (ubiquitin thiolesterase); PARK5; ubiquitin carboxyl-terminal hydrolase isozyme L1; PGP9.5; Uch L1; ubiquitin thioesterase L1; neuron cytoplasmic protein 9.5; ubiquitin C-terminal hydrolase; PGP95; Uch-L1; PGP 9.5;

Gene ID 7345

mRNA Refseq NM_004181

Protein Refseq NP_004172

MIM 191342

UniProt ID P09936

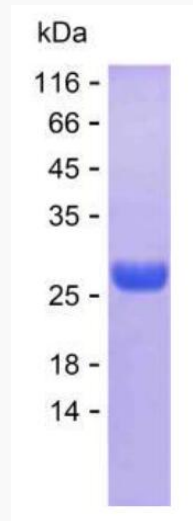
 Tel: 1-631-559-9269 1-516-512-3133

 Email: info@creative-biomart.com  Fax: 1-631-938-8127

 45-1 Ramsey Road, Shirley, NY 11967, USA



SDS-PAGE



Tel: 1-631-559-9269 1-516-512-3133

Email: info@creative-biomart.com Fax: 1-631-938-8127

45-1 Ramsey Road, Shirley, NY 11967, USA