

Recombinant Pig UCHL1 protein, His-tagged

Cat. No. UCHL1-4343P Lot. No. (See product label)

SPECIFICATION

Product Overview	Recombinant Pig UCHL1 protein(Q6SEG5)(1-220aa), fused with N-terminal His tag, was expressed in E.coli.
Species	Pig
Source	E.coli
ProteinLength	1-220aa
Form	If the delivery form is liquid, the default storage buffer is Tris/PBS-based buffer, 5%-50% glycerol. If the delivery form is lyophilized powder, the buffer before lyophilization is Tris/PBS-based buffer, 6% Trehalose, pH 8.0.
Molecular Mass	28.7 kDa
Purity	Greater than 85% as determined by SDS-PAGE.
Storage	Store at -20°C/-80°C upon receipt, aliquoting is necessary for mutiple use. Avoid repeated freeze-thaw cycles.
Reconstitution	We recommend that this vial be briefly centrifuged prior to opening to bring the contents to the bottom. Please reconstitute protein in deionized sterile water to a concentration of 0.1-1.0 mg/mL. We recommend to add 5-50% of glycerol (final concentration) and aliquot for long-term storage at -20°C/-80°C.

 Tel: 1-631-559-9269 1-516-512-3133

 Email: info@creative-biomart.com  Fax: 1-631-938-8127

 45-1 Ramsey Road, Shirley, NY 11967, USA

AA Sequence

MQLKPMEINPEMLNKVLTRLGVAGHWRFADVLGLEEEESLGSVPAPACALLLLFPLTA
 QHENFRKKQIEELKGQEVSPKVYFMKQTIGNSCGTIGLIHAVANNQDKLEFEDGSVL
 KQFLSETEKLSPEDRAKCFEKNEAIQAAHDAVAQEGQCRVDDKVNHFHILFNNVDG
 HLYELDGRMPFPVNHGASSEDSLLQDAAKVCREFTEREQGEVRFSAVALC

GENE INFORMATION

Gene Name [UCHL1 ubiquitin carboxyl-terminal esterase L1 \(ubiquitin thiolesterase\) \[Sus scrofa \]](#)

Official Symbol [UCHL1](#)

Synonyms

UCHL1; ubiquitin carboxyl-terminal esterase L1 (ubiquitin thiolesterase); ubiquitin
 carboxyl-terminal hydrolase isozyme L1; ubiquitin thioesterase L1; ubiquitin
 thiolesterase L1; ubiquitin C-terminal hydrolase-L1; ubiquitin carboxyl-terminal
 hydrolase L1; UCH-L1;

Gene ID [396637](#)

mRNA Refseq [NM_213763](#)

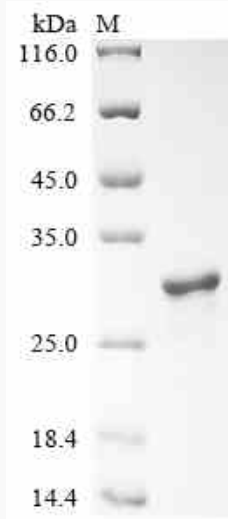
Protein Refseq [NP_998928](#)

 Tel: 1-631-559-9269 1-516-512-3133

 Email: info@creative-biomart.com  Fax: 1-631-938-8127

 45-1 Ramsey Road, Shirley, NY 11967, USA

SDS-PAGE



 Tel: 1-631-559-9269 1-516-512-3133

 Email: info@creative-biomart.com  Fax: 1-631-938-8127

 45-1 Ramsey Road, Shirley, NY 11967, USA