

Recombinant Human UCHL1, GST-tagged

Cat. No. UCHL1-49H Lot. No. (See product label)

SPECIFICATION

Product Overview	Recombinant human full length PGP9.5 protein with GST-tag was expressed in <i>E.coli</i> .
Species	Human
Source	E.coli
Description	Protein gene product (PGP9.5) is a neuron specific protein, structurally and immunologically distinct from neuron specific enolase. The protein which has a molecular weight of 27kDa was first identified by high resolution two dimensional PAGE. Standard immunohistochemical techniques have demonstrated the presence of PGP9.5 in neurons and nerve fibres at all levels of the central and peripheral nervous system, in many neuroendocrine cells, in segments of the renal tubules, in spermatogonia and Leydig cells of the testis, in ova and in some cells of both the pregnant and non-pregnant corpus luteum.
Application And Suggested Dilutions	ELISA Inhibition Assays Western Blotting.
Characterization	On SDS-PAGE commassie blue stained gel, the purified recombinant protein shows a band at 36kDa.
Presentation	100µl purified human PGP9.5 protein at 100µg/ml in 50mM Tris-Acetate, pH7.5, 1mM EDTA, 20% Glycerol.
Storage & Stability	Store vial at -20°C to -80°C. When stored at the recommended temperature, this

 Tel: 1-631-559-9269 1-516-512-3133

 Email: info@creative-biomart.com  Fax: 1-631-938-8127

 45-1 Ramsey Road, Shirley, NY 11967, USA

protein is stable for 12 months.

Full Length Full L.

GENE INFORMATION

Gene Name [UCHL1 ubiquitin carboxyl-terminal esterase L1 \(ubiquitin thiolesterase\) \[Homo sapiens \]](#)

Synonyms

UCHL1; PARK5; PGP9.5; Uch-L1; UCH-L1; EC 3.4.19.12, EC 6; Neuron cytoplasmic protein 9.5; Ubiquitin thiolesterase L1; ubiquitin C-terminal esterase L1; ubiquitin carboxyl-terminal esterase L1; ubiquitin thiolesterase L1; Ubiquitin carboxyl-terminal esterase L1 (ubiquitin thiolesterase); Ubiquitin carboxy-terminal hydrolase L1; Ubiquitin carboxy-terminal hydrolase L1 (UCH-L1); EC 3.1.2.15; ubiquitin thiolesterase; ubiquitin carboxy-terminal esterase; isopeptidase; isopeptidase T; ubiquitin C-terminal hydrolase; ubiquitin carboxy-terminal hydrolase; ubiquitin-C-terminal-thiolester hydrolase; ubiquitin-C-terminal-thioester hydrolase

Gene ID [7345](#)

mRNA Refseq [NM_004181](#)

Protein Refseq [NP_004172](#)

MIM [191342](#)

UniProt ID [P09936](#)

Chromosome Location 4p14

Pathway Neurodegenerative Disorders; Parkinson"s disease

 Tel: 1-631-559-9269 1-516-512-3133

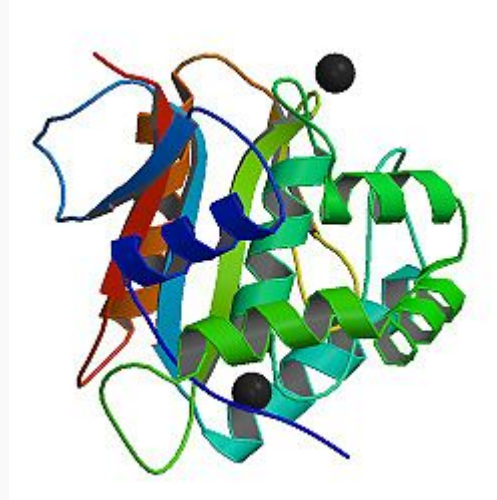
 Email: info@creative-biomart.com  Fax: 1-631-938-8127

 45-1 Ramsey Road, Shirley, NY 11967, USA

Function

cysteine-type endopeptidase activity; ligase activity; omega peptidase activity; peptidase activity; protein binding; ubiquitin binding; ubiquitin thiolesterase activity

PDB rendering based on 2etl.



 Tel: 1-631-559-9269 1-516-512-3133

 Email: info@creative-biomart.com  Fax: 1-631-938-8127

 45-1 Ramsey Road, Shirley, NY 11967, USA