

Active Recombinant Human UCHL1 protein, His-tagged

Cat. No. UCHL1-8938H Lot. No. (See product label)

SPECIFICATION

Product Overview	Human Ubiquitin Carboxy-terminal Hydrolase (UCHL1), also known as PGP9.5, with N-terminal His-tag, expressed in E. coli expression system.
Species	Human
Source	E.coli
ProteinLength	2-223
Description	The protein encoded by this gene belongs to the peptidase C12 family. This enzyme is a thiol protease that hydrolyzes a peptide bond at the C-terminal glycine of ubiquitin. This gene is specifically expressed in the neurons and in cells of the diffuse neuroendocrine system. Mutations in this gene may be associated with Parkinson disease.
Form	Aqueous buffer solution.
Bio-activity	7433 pmol/min/μg
Molecular Mass	25.8 kDa
Purity	>90%
Applications	Useful for the study of enzyme kinetics, screening inhibitors, and selectivity profiling.

 Tel: 1-631-559-9269 1-516-512-3133

 Email: info@creative-biomart.com  Fax: 1-631-938-8127

 45-1 Ramsey Road, Shirley, NY 11967, USA

Storage	At least 6 months at -80 centigrade.
Concentration	2.38 mg/ml
Storage Buffer	45 mM Tris-HCl, pH 8.0, 124 mM NaCl, 2.4 mM KCl, 225 mM imidazole, 10% glycerol, and 3 mM DTT.
Shipping	At -80.

GENE INFORMATION

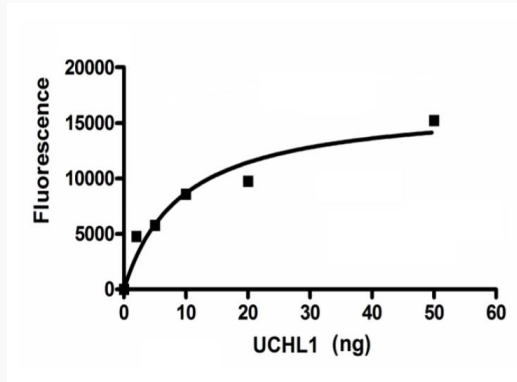
Gene Name	UCHL1 ubiquitin C-terminal hydrolase L1 [Homo sapiens (human)]
Official Symbol	UCHL1
Synonyms	UCHL1; ubiquitin C-terminal hydrolase L1; NDGOA; PARK5; PGP95; SPG79; PGP9.5; Uch-L1; HEL-117; PGP 9.5; HEL-S-53; ubiquitin carboxyl-terminal hydrolase isozyme L1; epididymis luminal protein 117; epididymis secretory protein Li 53; neuron cytoplasmic protein 9.5; ubiquitin carboxyl-terminal esterase L1 (ubiquitin thioesterase); ubiquitin thioesterase L1; ubiquitin thioesterase; EC 3.4.19.12
Gene ID	7345
mRNA Refseq	NM_004181
Protein Refseq	NP_004172
MIM	191342
UniProt ID	P09936

 Tel: 1-631-559-9269 1-516-512-3133

 Email: info@creative-biomart.com  Fax: 1-631-938-8127

 45-1 Ramsey Road, Shirley, NY 11967, USA

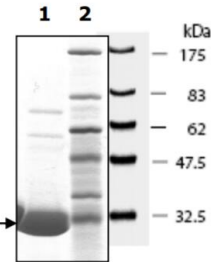
Quality Assurance



10% SDS-PAGE
Coomassie staining

Lane 1:
5 µg UCHL1
Lane 2:
Protein Marker
BioLabs (#P7708L)

MW: 23.4 kDa
Purity: >90%



 Tel: 1-631-559-9269 1-516-512-3133

 Email: info@creative-biomart.com  Fax: 1-631-938-8127

 45-1 Ramsey Road, Shirley, NY 11967, USA