

Recombinant Human UCP1 Protein (2-307 aa), His-SUMO-tagged

Cat. No. UCP1-846H **Lot. No.** (See product label)

SPECIFICATION

Product Overview	Recombinant Human UCP1 Protein (2-307 aa) is produced by E. coli expression system. This protein is fused with a 6xHis-SUMO tag at the N-terminal. Research Area: Transport. Protein Description: Full Length of Mature Protein.
Species	Human
Source	E.coli
ProteinLength	2-307 aa
Description	UCP are mitochondrial transporter proteins that create proton leaks across the inner mitochondrial mbrane, thus uncoupling oxidative phosphorylation from ATP synthesis. As a result, energy is dissipated in the form of heat.
Form	Tris-based buffer, 50% glycerol
Molecular Mass	48.9 kDa
AA Sequence	GGLTASDVHPTLGVQLFSAGIAACLADVITFPLDTAKVRLQVQGECPTSSVIRYKGVL GTITAVVKTEGRMKLYSGLPAGLQRQISSASLRIGLYDTVQEFLTAGKETAPSLGSKIL AGLTTGGVAVFIGQPTEVVKVRLQAQSHLHGKIPRYTGTYNAYRIIATTEGLTGLWKG TTPNLMRSVIINCTELVITYDLMKEAFVKNNILADDVPCHLVSALIAGFCATAMSSPVD VVKTRFINSPPGQYKSVPCAMKVFTNEGPTAFFKGLVPSFLRLGSWNVIMFVCFE QLKRELSKSRQTMDCAT

 Tel: 1-631-559-9269 1-516-512-3133

 Email: info@creative-biomart.com  Fax: 1-631-938-8127

 45-1 Ramsey Road, Shirley, NY 11967, USA

Purity	> 90% as determined by SDS-PAGE.
Notes	Repeated freezing and thawing is not recommended. Store working aliquots at 4 centigrade for up to one week.
Storage	The shelf life is related to many factors, storage state, buffer ingredients, storage temperature and the stability of the protein itself. Generally, the shelf life of liquid form is 6 months at -20 centigrade/-80 centigrade. The shelf life of lyophilized form is 12 months at -20 centigrade/-80 centigrade.
Concentration	A hardcopy of COA with concentration instruction is sent along with the products.

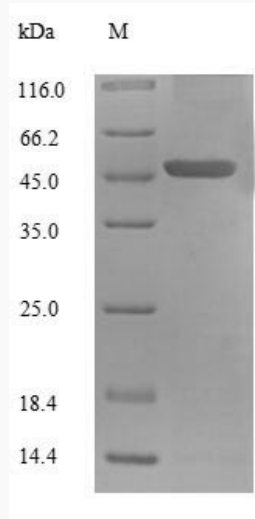
GENE INFORMATION

Gene Name	UCP1 uncoupling protein 1 (mitochondrial, proton carrier) [Homo sapiens]
Official Symbol	UCP1
Synonyms	UCP1; UCP; SLC25A7;
Gene ID	7350
mRNA Refseq	NM_021833
Protein Refseq	NP_068605
MIM	113730
UniProt ID	P25874

 Tel: 1-631-559-9269 1-516-512-3133

 Email: info@creative-biomart.com  Fax: 1-631-938-8127

 45-1 Ramsey Road, Shirley, NY 11967, USA



(Tris-Glycine gel) Discontinuous SDS-PAGE (reduced) with 5% enrichment gel and 15% separation gel.

 Tel: 1-631-559-9269 1-516-512-3133

 Email: info@creative-biomart.com  Fax: 1-631-938-8127

 45-1 Ramsey Road, Shirley, NY 11967, USA