

# Recombinant Full Length Human UCP2 Protein, N-His-tagged

Cat. No. UCP2-1963HFL Lot. No. (See product label)

## SPECIFICATION

|                         |   |
|-------------------------|---|
| <b>Product Overview</b> | Recombinant Full Length Human UCP2 Protein, fused to His-tag at N-terminus, was expressed in E. coli.   |
| <b>Species</b>          | Human   |
| <b>Source</b>           | E.coli  |
| <b>Description</b>      | <p>Mitochondrial uncoupling proteins (UCP) are members of the larger family of mitochondrial anion carrier proteins (MACP). UCPs separate oxidative phosphorylation from ATP synthesis with energy dissipated as heat, also referred to as the mitochondrial proton leak. UCPs facilitate the transfer of anions from the inner to the outer mitochondrial membrane and the return transfer of protons from the outer to the inner mitochondrial membrane. They also reduce the mitochondrial membrane potential in mammalian cells. Tissue specificity occurs for the different UCPs and the exact methods of how UCPs transfer H<sup>+</sup>/OH<sup>-</sup> are not known. UCPs contain the three homologous protein domains of MACPs. This gene is expressed in many tissues, with the greatest expression in skeletal muscle. It is thought to play a role in nonshivering thermogenesis, obesity and diabetes. Chromosomal order is 5'-UCP3-UCP2-3'.</p> |
| <b>Form</b>             | 25mM Tris, pH8.0, 150 mM NaCl, 10% glycerol, 1 % Sarkosyl.  |
| <b>Molecular Mass</b>   | 33 kDa  |
| <b>AA Sequence</b>      | A DNA sequence encoding human full-length UCP2.   |

 Tel: 1-631-559-9269 1-516-512-3133

 Email: [info@creative-biomart.com](mailto:info@creative-biomart.com)  Fax: 1-631-938-8127

 45-1 Ramsey Road, Shirley, NY 11967, USA

|                         |   |
|-------------------------|---|
| <b>Purity</b>           | > 80% as determined by SDS-PAGE and Coomassie blue staining.  |
| <b>Stability</b>        | Stable for 12 months from the date of receipt of the product under proper storage and handling conditions. Avoid repeated freeze-thaw cycles. |
| <b>Storage</b>          | Store at -80 centigrade.  |
| <b>Concentration</b>    | >50 ug/mL as determined by microplate BCA method.   |
| <b>Protein Families</b> | Druggable Genome  |
| <b>Full Length</b>      | Full L.   |

## GENE INFORMATION

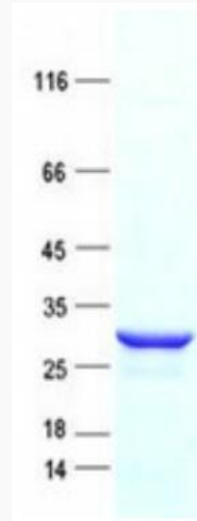
|                        |  |
|------------------------|--|
| <b>Gene Name</b>       | UCP2 uncoupling protein 2 [ Homo sapiens (human) ] |
| <b>Official Symbol</b> | UCP2   |
| <b>Synonyms</b>        | UCPH; BMIQ4; SLC25A8                               |
| <b>Gene ID</b>         | 7351   |
| <b>mRNA Refseq</b>     | NM_003355.3  |
| <b>Protein Refseq</b>  | NP_003346.2  |
| <b>MIM</b>             | 601693   |
| <b>UniProt ID</b>      | P55851   |

 Tel: 1-631-559-9269 1-516-512-3133

 Email: [info@creative-biomart.com](mailto:info@creative-biomart.com)  Fax: 1-631-938-8127

 45-1 Ramsey Road, Shirley, NY 11967, USA

**SDS-PAGE**



 Tel: 1-631-559-9269 1-516-512-3133

 Email: [info@creative-biomart.com](mailto:info@creative-biomart.com)  Fax: 1-631-938-8127

 45-1 Ramsey Road, Shirley, NY 11967, USA