

Active Recombinant Human UGCG Protein, His-tagged

Cat. No. UGCG-4627H Lot. No. (See product label)

SPECIFICATION

Product Overview	Recombinant Human UGCG Protein(Lys39~Leu171), fused with N-terminal His tag, was expressed in E. coli.
Species	Human
Source	E.coli
ProteinLength	Lys39~Leu171
Form	20mM Tris, 150mM NaCl, pH8.0, containing 0.05% sarcosyl and 5% trehalose.
Molecular Mass	16kDa
Purity	>95%
Storage	Avoid repeated freeze/thaw cycles. Store at 2-8°C for one month. Aliquot and store at -80°C for 12 months.
Reconstitution	Reconstitute in 20mM Tris, 150mM NaCl (pH8.0) to a concentration of 0.1-1.0mg/mL. Do not vortex.

GENE INFORMATION

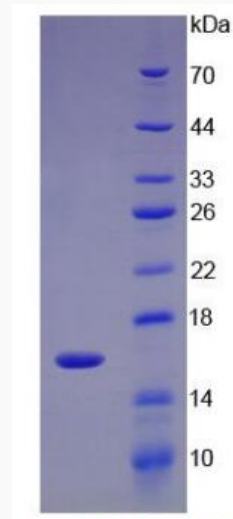
Gene Name UGCG UDP-glucose ceramide glucosyltransferase [Homo sapiens]

 Tel: 1-631-559-9269 1-516-512-3133

 Email: info@creative-biomart.com  Fax: 1-631-938-8127

 45-1 Ramsey Road, Shirley, NY 11967, USA

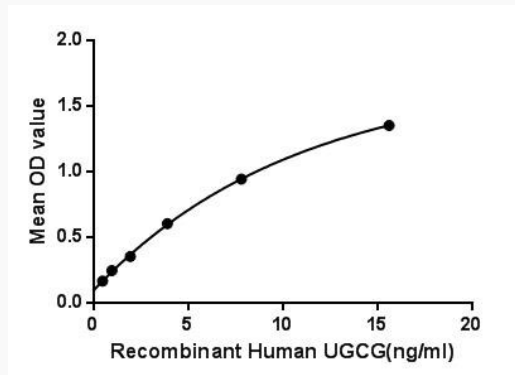
Official Symbol	UGCG
Synonyms	UGCG; UDP-glucose ceramide glucosyltransferase; ceramide glucosyltransferase; GCS; glucosylceramide synthase; GLCT-1; UDP-glucose:N-acylsphingosine D-glucosyltransferase; GLCT1
Gene ID	7357
mRNA Refseq	NM_003358
Protein Refseq	NP_003349
MIM	602874
UniProt ID	Q16739

SDS-PAGE

 Tel: 1-631-559-9269 1-516-512-3133

 Email: info@creative-biomart.com  Fax: 1-631-938-8127

 45-1 Ramsey Road, Shirley, NY 11967, USA



Binding Activity

Wells were washed with PBST and incubated for 1h with anti-UGCG pAb, then aspirated and washed 3 times. After incubation with HRP labelled secondary antibody, wells were aspirated and washed 3 times. With the addition of substrate solution, wells were incubated 15-25 minutes at 37°C. Finally, add 50 μ stop solution to the wells and read at 450nm immediately. The binding activity of UGCG and LMP2 was shown, and this effect was in a dose dependent manner.

 Tel: 1-631-559-9269 1-516-512-3133

 Email: info@creative-biomart.com  Fax: 1-631-938-8127

 45-1 Ramsey Road, Shirley, NY 11967, USA