

Recombinant Human ULBP1 Protein (26-215), C-Fc/Avi-tagged

Cat. No. ULBP1-12H Lot. No. (See product label)

SPECIFICATION

Product Overview Human ULBP1, also known as RAET1I, N2DL-1, NKG2DL1, UL16 binding protein 1. GenBank Accession No. NM_025218, a.a. 26-215, fused at the C-terminus of the Fc portion of Human IgG1, with C-terminal Avi-tag™, expressed in a HEK293 cell expression system. MW = 51 kDa. This protein runs at a higher molecular weight due to glycosylation.

Species Human

Source HEK293

ProteinLength 26-215

Description The protein encoded by this gene is a ligand of natural killer group 2, member D (NKG2D), an immune system-activating receptor on NK cells and T-cells. Binding of the encoded ligand to NKG2D leads to activation of several signal transduction pathways, including those of JAK2, STAT5, ERK and PI3K kinase/Akt. Also, in cytomegalovirus-infected cells, this ligand binds the UL16 glycoprotein and is prevented from activating the immune system. Three transcript variants encoding different isoforms have been found for this gene.

Form Aqueous buffer solution.

Molecular Mass 51 kDa

Purity ≥90%

 Tel: 1-631-559-9269 1-516-512-3133

 Email: info@creative-biomart.com  Fax: 1-631-938-8127

 45-1 Ramsey Road, Shirley, NY 11967, USA

Usage	Thaw on ice and gently mix prior to use. DO NOT VORTEX. Perform a quick spin before opening. Aliquot into small volumes and flash freeze for long term storage. Avoid multiple freeze/thaw cycles.
Storage	At least 6 months at -80 centigrade.
Storage Buffer	8 mM Phosphate, pH 7.4, 110 mM NaCl, 2.2 mM KCl, and 20% glycerol.
Shipping	At -80 centigrade.
Warning	Avoid freeze/thaw cycles.

GENE INFORMATION

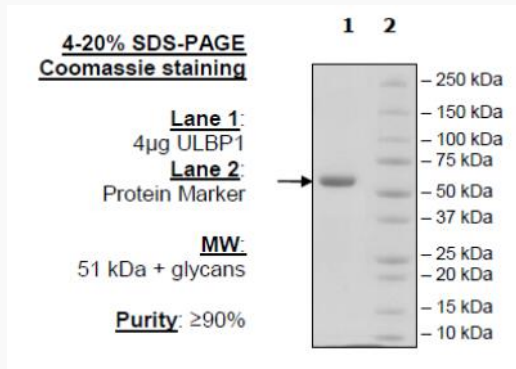
Gene Name	ULBP1 UL16 binding protein 1 [Homo sapiens (human)]
Official Symbol	ULBP1
Synonyms	ULBP1; UL16 binding protein 1; N2DL-1; RAET1I; NKG2DL1; UL16-binding protein 1; NKG2D ligand 1; alcan-beta; retinoic acid early transcript 1I
Gene ID	80329
mRNA Refseq	NM_025218
Protein Refseq	NP_079494
MIM	605697
UniProt ID	Q9BZM6

 Tel: 1-631-559-9269 1-516-512-3133

 Email: info@creative-biomart.com  Fax: 1-631-938-8127

 45-1 Ramsey Road, Shirley, NY 11967, USA

WB



 Tel: 1-631-559-9269 1-516-512-3133

 Email: info@creative-biomart.com  Fax: 1-631-938-8127

 45-1 Ramsey Road, Shirley, NY 11967, USA