

## Active Recombinant Human ULBP1 protein, His-tagged

Cat. No. ULBP1-2352H Lot. No. (See product label)

### SPECIFICATION

<b>Product Overview</b>	Active Recombinant Human ULBP1 protein(NP_079494.1) (Met 1-Gly 216) was expressed in HEK293, with a polyhistidine tag at the C-terminus.
<b>Species</b>	Human
<b>Source</b>	HEK293
<b>ProteinLength</b>	1-216 aa
<b>Form</b>	Lyophilized from sterile PBS, pH 7.4.
<b>Bio-activity</b>	Immobilized human ULBP1-His at 10 µg/ml (100 µl/well) can bind human S4-Fc3L3-NKG2D, The EC50 of human S4-Fc3L3-NKG2D is 0.39-0.91 µg/ml.
<b>Molecular Mass</b>	The mature form of recombinant human ULBP1 comprises 202 amino acids and predicts a molecular mass of 23.8 kDa. The apparent molecular mass of rhULBP1 is approximately 28-32 kDa in SDS-PAGE under reducing conditions due to glycosylation.
<b>Endotoxin</b>	< 1.0 EU per µg of the protein as determined by the LAL method.
<b>Purity</b>	> 98 % as determined by SDS-PAGE
<b>Storage</b>	Store it under sterile conditions at -20°C to -80°C upon receiving. Recommend to aliquot the protein into smaller quantities for optimal storage. Avoid repeated freeze-

 Tel: 1-631-559-9269 1-516-512-3133

 Email: [info@creative-biomart.com](mailto:info@creative-biomart.com)  Fax: 1-631-938-8127

 45-1 Ramsey Road, Shirley, NY 11967, USA

thaw cycles.

**Reconstitution**

It is recommended that sterile water be added to the vial to prepare a stock solution of 0.2 ug/ul. Centrifuge the vial at 4°C before opening to recover the entire contents.

## GENE INFORMATION

**Gene Name** [ULBP1 UL16 binding protein 1 \[ Homo sapiens \]](#)

**Official Symbol** [ULBP1](#)

**Synonyms** [ULBP1](#); [UL16 binding protein 1](#); [NKG2D ligand 1](#); [RAET1I](#); [N2DL-1](#); [NKG2DL1](#); [alcan-beta](#); [UL16-binding protein 1](#); [retinoic acid early transcript 1I](#);

**Gene ID** [80329](#)

**mRNA Refseq** [NM\\_025218](#)

**Protein Refseq** [NP\\_079494](#)

**MIM** [605697](#)

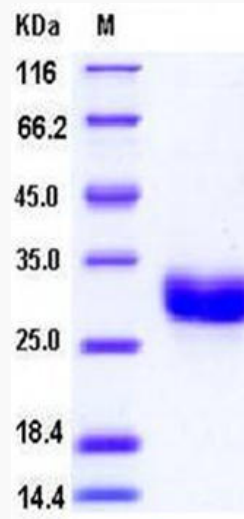
**UniProt ID** [Q9BZM6](#)

 Tel: 1-631-559-9269 1-516-512-3133

 Email: [info@creative-biomart.com](mailto:info@creative-biomart.com)  Fax: 1-631-938-8127

 45-1 Ramsey Road, Shirley, NY 11967, USA

SDS-PAGE



 Tel: 1-631-559-9269 1-516-512-3133

 Email: [info@creative-biomart.com](mailto:info@creative-biomart.com)  Fax: 1-631-938-8127

 45-1 Ramsey Road, Shirley, NY 11967, USA