

Recombinant Human UL16 binding protein 1 Protein, His tagged

Cat. No. ULBP1-270H **Lot. No.** (See product label)

SPECIFICATION

Product Overview	Recombinant human ULBP1/NKG2DL1 protein (Q9BZM6) (Gly 26-Gly 216) with a His tag at the C-terminus was expressed in HEK293.
Species	Human
Source	HEK293
ProteinLength	26-216aa
Description	The protein encoded by this gene is a ligand of natural killer group 2, member D (NKG2D), an immune system-activating receptor on NK cells and T-cells. Binding of the encoded ligand to NKG2D leads to activation of several signal transduction pathways, including those of JAK2, STAT5, ERK and PI3K kinase/Akt. Also, in cytomegalovirus-infected cells, this ligand binds the UL16 glycoprotein and is prevented from activating the immune system. Three transcript variants encoding different isoforms have been found for this gene.
Tag	C-His
Molecular Mass	23.7 kDa
Endotoxin	Less than 1.0 EU/μg by the LAL method.
Purity	>95% as determined by SDS-PAGE.

 Tel: 1-631-559-9269 1-516-512-3133

 Email: info@creative-biomart.com  Fax: 1-631-938-8127

 45-1 Ramsey Road, Shirley, NY 11967, USA

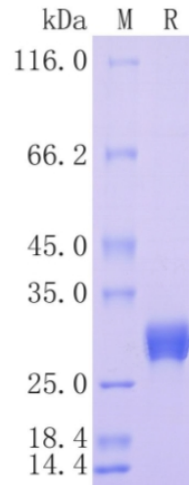
Storage	Please avoid repeated freeze-thaw cycles. Samples are stable for up to twelve months from date of receipt at -20 to -80 centigrade. It is recommended that aliquot the reconstituted solution to minimize freeze-thaw cycles.
Storage Buffer	Lyophilized from a 0.2 µm filtered solution of PBS, pH7.4, 5% Trehalose, 5% mannitol.
Reconstitution	Reconstitute at 250 µg/mL in sterile water.
GENE INFORMATION	
Gene Name	ULBP1 UL16 binding protein 1 [Homo sapiens (human)]
Official Symbol	ULBP1
Synonyms	ULBP1; UL16 binding protein 1; NKG2D ligand 1; RAET11; N2DL-1; NKG2DL1; alcan-beta; UL16-binding protein 1; retinoic acid early transcript 11;
Gene ID	80329
mRNA Refseq	NM_025218
Protein Refseq	NP_079494
MIM	605697
UniProt ID	Q9BZM6

 Tel: 1-631-559-9269 1-516-512-3133

 Email: info@creative-biomart.com  Fax: 1-631-938-8127

 45-1 Ramsey Road, Shirley, NY 11967, USA

**Protein on SDS-
PAGE under
reducing (R)
condition.**



 Tel: 1-631-559-9269 1-516-512-3133

 Email: info@creative-biomart.com  Fax: 1-631-938-8127

 45-1 Ramsey Road, Shirley, NY 11967, USA