

Recombinant Full Length Human UPF1 Protein, C-Flag-tagged

Cat. No. UPF1-193HFL Lot. No. (See product label)

SPECIFICATION

Product Overview	Recombinant Full Length Human UPF1 Protein, fused to Flag-tag at C-terminus, was expressed in Mammalian cells.
Species	Human
Source	Mammalian Cells
Description	This gene encodes a protein that is part of a post-splicing multiprotein complex involved in both mRNA nuclear export and mRNA surveillance. mRNA surveillance detects exported mRNAs with truncated open reading frames and initiates nonsense-mediated mRNA decay (NMD). When translation ends upstream from the last exon-exon junction, this triggers NMD to degrade mRNAs containing premature stop codons. This protein is located only in the cytoplasm. When translation ends, it interacts with the protein that is a functional homolog of yeast Upf2p to trigger mRNA decapping. Use of multiple polyadenylation sites has been noted for this gene. Alternative splicing results in multiple transcript variants.
Form	25 mM Tris HCl, pH 7.3, 100 mM glycine, 10% glycerol.
Molecular Mass	122.9 kDa
AA Sequence	MSVEAYGPSSQTLTFLDTEEAELLGADTQGSEFEFTDFTLPSQTQTTPPGGPGGGGGAGGGPGGAGAGAA AGQLDAQVGPPEGILQNGAVDDSVAKTSQLLAELNFEEDDEE DTYYTKDLPIHACSYCGIHDPACVVYCNTS KKWFCNCRGNTSGSHIVNHLVRAKCK EVTLHKDGPLGETVLECYNCGCRNVFLLGFIPAKADSVVLLCR QPCASQSSSLKDIN

 Tel: 1-631-559-9269 1-516-512-3133

 Email: info@creative-biomart.com  Fax: 1-631-938-8127

 45-1 Ramsey Road, Shirley, NY 11967, USA

WDSSQWQPLIQDRCFLSWLVKIPSEQEQLRARQITAQQINKLEELWKENPSATLEDL
 EKPGVDEEPQHVLLRYEDAYQYQNIQIFGPLVKLEADYDKKLKESQTQDNITVRWDLG
 LNKKRIAYFTLPKT DSDMRLMQGDEICLRYKGD LAPLWKGIGHVIKVPDNYGDEIAIE
 LRSSVGAPVEVTHNFQVDFVWKSTSF DRMQSALKTF AVDETSVSGYIYHKLLGHEV
 EDVIIKCQLPKRFTAQGLPDLNHSQVYAVKTVLQRPLSLI QGPPGTGKT VTSATIVYH
 LARQGNPVLVCAPSNI AVDQLTEKIHQTGLKVVRLCAKSRE AIDSPVSFLA LHNQIR
 NMDSMPELQKLQQLKDET GELSSADEKRYRALKRTAERELLMNADVICTCVGAGD
 PRLAKMQF RSILIDESTQATEPECMV PVVLGAKQLILVGDH CQLGPPVVMCKKAAKA
 GLSQSLFERLVVLGIRPIRLQV QYRMHPALSAFPSNIFYEGSLQNGVTAADR VKKGF
 DFQWPQPKPMFFYVTQGQEEIASSGTSYLN RTEA ANVEKITTKLLKAGAKPDQIGI
 TPYEGQRSYLVQYMQFSGSLHTKLYQEVEIASVDAFQGREKDFIILS CVRANEHQGI
 GFLNDPRRLNVALTRARYGVII VGNPKALSKQPLWNHLLNYYKEQKVLVEGPLNNLR
 ESL MQFSKPRKLVNTINPGARFMTTAMYDAREAIIPGSVYDRSSQGRPSSMYFQTH
 DQIGMISAGPSHVAAMN IPIPFNLVMPMPPPGYFGQANGPAAGRGT PKGKTGRG
 GRQKNRFG LPGPSQTNLPNSQASQD VASQPFS QGALTQGYISMSQPSQMSQPGL
 SQPELSQDSYLGDEFKSQIDVALS QDSTYQGERAYQHGGVTGLS QYTRTRPLEQKL
 ISEEDLAANDILDYKDDDDKV

Purity > 80% as determined by SDS-PAGE and Coomassie blue staining.

Stability Stable for 12 months from the date of receipt of the product under proper storage and handling conditions. Avoid repeated freeze-thaw cycles.

Storage Store at -80 centigrade.

Concentration >50 ug/mL as determined by microplate BCA method.

Preparation Recombinant protein was captured through anti-DDK affinity column followed by conventional chromatography steps.

 Tel: 1-631-559-9269 1-516-512-3133

 Email: info@creative-biomart.com  Fax: 1-631-938-8127

 45-1 Ramsey Road, Shirley, NY 11967, USA

Protein Families Druggable Genome

Full Length Full L.

GENE INFORMATION

Gene Name UPF1 UPF1 RNA helicase and ATPase [Homo sapiens (human)]

Official Symbol UPF1

Synonyms UTF; HUPF1; NORF1; RENT1; smg-2; pNORF1

Gene ID 5976

mRNA Refseq NM_002911.4

Protein Refseq NP_002902.2

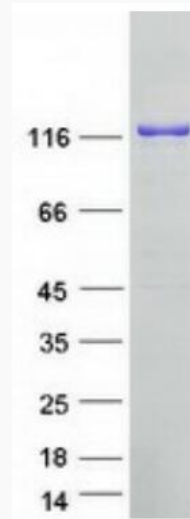
MIM 601430

UniProt ID Q92900

 Tel: 1-631-559-9269 1-516-512-3133

 Email: info@creative-biomart.com  Fax: 1-631-938-8127

 45-1 Ramsey Road, Shirley, NY 11967, USA



Coomassie blue staining of purified UPF1 protein.

 Tel: 1-631-559-9269 1-516-512-3133

 Email: info@creative-biomart.com  Fax: 1-631-938-8127

 45-1 Ramsey Road, Shirley, NY 11967, USA