

# Recombinant Human UPF1 Protein, Myc/DDK-tagged, C13 and N15-labeled

**Cat. No.** UPF1-4190H    **Lot. No.** (See product label)

## SPECIFICATION

<b>Product Overview</b>	UPF1 MS Standard C13 and N15-labeled recombinant protein (NP_002902) with a C-terminal MYC/DDK tag, was expressed in HEK293 cells.
<b>Species</b>	Human
<b>Source</b>	HEK293
<b>Description</b>	This gene encodes a protein that is part of a post-splicing multiprotein complex involved in both mRNA nuclear export and mRNA surveillance. mRNA surveillance detects exported mRNAs with truncated open reading frames and initiates nonsense-mediated mRNA decay (NMD). When translation ends upstream from the last exon-exon junction, this triggers NMD to degrade mRNAs containing premature stop codons. This protein is located only in the cytoplasm. When translation ends, it interacts with the protein that is a functional homolog of yeast Upf2p to trigger mRNA decapping. Use of multiple polyadenylation sites has been noted for this gene. Alternative splicing results in multiple transcript variants.
<b>Molecular Mass</b>	123 kDa
<b>AA Sequence</b>	MSVEAYGPSSQTLTFLDTEEAELLGADTQGSEFEFTDFTLPSQTQTTPGGPGGPGG GGAGGPGGAGAGAAAGQLDAQVGPEGILQNGAVDDSVAKTSQLLAELNFEDEED TYYTKDLPIHACSYCGIHDPAVCVYCNVSKKWFVFCNVRGNTSGSHIVNHLVRAKCKE VTLHKDGPLGETVLECYNCGCRNVFLLGFIPAKADSVVLLCRQPCASQSSLKIDINW

 Tel: 1-631-559-9269    1-516-512-3133

 Email: [info@creative-biomart.com](mailto:info@creative-biomart.com)     Fax: 1-631-938-8127

 45-1 Ramsey Road, Shirley, NY 11967, USA

DSSQWQPLIQDRCFLSWLVKIPSEQEQLRARQITAQQINKLEELWKENPSATLEDLE  
 KPGVDEEPQHVLLRYEDAYQYQNIFGPLVKLEADYDKKLIKESQTQDNITVRWDLGL  
 NKKRIAYFTLPKTDSMRLMQGDEICLRYKGD LAPLWKGIGHVIKVPDNYGDEIAIEL  
 RSSVGAPVEVTHNFQVDFVWKSTSFDRMQSALKTF AVDETSVSGYIYHKLLGHEVE  
 DVIIKCQLPKRFTAQGLPDLNHSQVYAVKTVLQRPLSLIQGPPGTGKT VTSATIVYHL  
 ARQGNPVLVCAPSNI AVDQLTEKIHQTGLKVVR LCAKSRE AIDSPVSFLALHNQIRN  
 MDSMP ELQKLQQLKDET GELSSADEKRYRALKRTAERELLMNADVICCTCVGAGDP  
 RLAKMQFRSILIDESTQATEPECMVPVVLGAKQLILVGDHCQLGPVVMCKKAAKAGL  
 SQSLFERLVVLGIRPIRLQVQYRMHPALSAFPSNIFYEGSLQNGVTAADR VKKGFDF  
 QWPQPKPMFFYVTQGQEEIASSGTSYLN RTEAANVEKITTKLLKAGAKPDQIGIITP  
 YEGQRSYLVQYMQFSGSLHTKLYQEVEIASVDAFQGREKDFIILSCVRANEHQGIGF  
 LNDPRRLNVALTRARYGVII VGNPKALSKQPLWNHLLNYYKEQKVLVEGPLNNLRES  
 LMQFSKPRKLVNTINPGARFMTTAMYDAREAIIPGSVYDRSSQGRPSSMYFQTHDQI  
 GMISAGPSHVAAMNIPIFNLMPPMPPPGYFGQANGPAAGRGTPKGTGRGGRQ  
 KNRFGLPGPSQTNLPNSQASQDVASQPFSQGALTQGYISMSQPSQMSQPGLSQPE  
 LSQDSYLGDEFKSQIDVALSQDSTYQGERAYQHGGVTGLSQYTRTRPLEQKLISEE  
 DLAANDILDYKDDDDKV

**Purity** > 80% as determined by SDS-PAGE and Coomassie blue staining

**Stability** Stable for 3 months from receipt of products under proper storage and handling conditions.

**Storage** Store at -80 centigrade. Avoid repeated freeze-thaw cycles.

**Concentration** 50 µg/mL as determined by BCA

**Storage Buffer** 100 mM glycine, 25 mM Tris-HCl, pH 7.3.

## GENE INFORMATION

 Tel: 1-631-559-9269 1-516-512-3133

 Email: [info@creative-biomart.com](mailto:info@creative-biomart.com)  Fax: 1-631-938-8127

 45-1 Ramsey Road, Shirley, NY 11967, USA

<b>Gene Name</b>	UPF1 UPF1 RNA helicase and ATPase [ Homo sapiens (human) ]
<b>Official Symbol</b>	UPF1
<b>Synonyms</b>	UPF1; UPF1 regulator of nonsense transcripts homolog (yeast); regulator of nonsense transcripts 1, RENT1; regulator of nonsense transcripts 1; HUPF1; KIAA0221; NORF1; pNORF1; smg 2; smg 2 homolog; nonsense mediated mRNA decay factor (C. elegans); UP Frameshift 1; delta helicase; yeast Upf1p homolog; ATP-dependent helicase RENT1; nonsense mRNA reducing factor 1; up-frameshift mutation 1 homolog; up-frameshift suppressor 1 homolog; smg-2 homolog, nonsense mediated mRNA decay factor; RENT1; smg-2; FLJ43809; FLJ46894;
<b>Gene ID</b>	5976
<b>mRNA Refseq</b>	NM_002911
<b>Protein Refseq</b>	NP_002902
<b>MIM</b>	601430
<b>UniProt ID</b>	Q92900

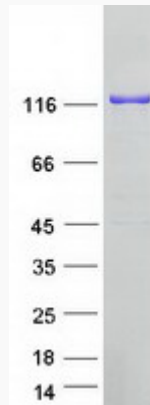
 Tel: 1-631-559-9269 1-516-512-3133

 Email: [info@creative-biomart.com](mailto:info@creative-biomart.com)  Fax: 1-631-938-8127

 45-1 Ramsey Road, Shirley, NY 11967, USA



SDS-PAGE



Tel: 1-631-559-9269 1-516-512-3133

Email: [info@creative-biomart.com](mailto:info@creative-biomart.com) Fax: 1-631-938-8127

45-1 Ramsey Road, Shirley, NY 11967, USA