

Recombinant Human UQCRH Protein, Myc/DDK-tagged, C13 and N15-labeled

Cat. No. UQCRH-6506H Lot. No. (See product label)

SPECIFICATION

Product Overview	UQCRH MS Standard C13 and N15-labeled recombinant protein (NP_005995) with a C-terminal MYC/DDK tag, was expressed in HEK293 cells.
Species	Human
Source	HEK293
Description	This is a component of the ubiquinol-cytochrome c reductase complex (complex III or cytochrome b-c1 complex), which is part of the mitochondrial respiratory chain. This protein may mediate formation of the complex between cytochromes c and c1.
Molecular Mass	10.7 kDa
AA Sequence	MGLEDEQKMLTESGDPEEEEEEEEEELVDPLTTVREQCEQLEKCVKARERLELCDER VSSRSHTTEEDCTEELFDLHARDHCVAHKLFNNLKRTRPLEQKLISEEDLAANDILD YKDDDDKV
Purity	> 80% as determined by SDS-PAGE and Coomassie blue staining
Stability	Stable for 3 months from receipt of products under proper storage and handling conditions.
Storage	Store at -80 centigrade. Avoid repeated freeze-thaw cycles.

 Tel: 1-631-559-9269 1-516-512-3133

 Email: info@creative-biomart.com  Fax: 1-631-938-8127

 45-1 Ramsey Road, Shirley, NY 11967, USA

Concentration 50 µg/mL as determined by BCA

Storage Buffer 100 mM glycine, 25 mM Tris-HCl, pH 7.3.

GENE INFORMATION

Gene Name UQCRH ubiquinol-cytochrome c reductase hinge protein [Homo sapiens (human)]

Official Symbol UQCRH

Synonyms UQCRH; ubiquinol-cytochrome c reductase hinge protein; cytochrome b-c1 complex subunit 6, mitochondrial; QCR6; ubiquinol cytochrome c reductase; complex III subunit VIII; UQCR8; complex III subunit 6; mitochondrial hinge protein; cytochrome c1 non-heme 11 kDa protein; ubiquinol-cytochrome c reductase complex 11 kDa protein; ubiquinol-cytochrome c reductase, complex III subunit VIII; MGC111572;

Gene ID 7388

mRNA Refseq NM_006004

Protein Refseq NP_005995

MIM 613844

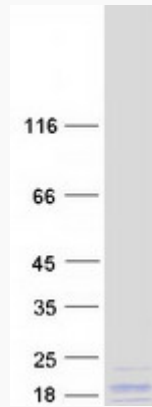
UniProt ID P07919

 Tel: 1-631-559-9269 1-516-512-3133

 Email: info@creative-biomart.com  Fax: 1-631-938-8127

 45-1 Ramsey Road, Shirley, NY 11967, USA

SDS-PAGE



 Tel: 1-631-559-9269 1-516-512-3133

 Email: info@creative-biomart.com  Fax: 1-631-938-8127

 45-1 Ramsey Road, Shirley, NY 11967, USA