

# Recombinant Human USF1 Protein, Myc/DDK-tagged, C13 and N15-labeled

Cat. No. USF1-5986H Lot. No. (See product label)

## SPECIFICATION

### Product Overview

USF1 MS Standard C13 and N15-labeled recombinant protein (NP\_996888) with a C-terminal MYC/DDK tag, was expressed in HEK293 cells.

### Species

Human

### Source

HEK293

### Description

This gene encodes a member of the basic helix-loop-helix leucine zipper family, and can function as a cellular transcription factor. The encoded protein can activate transcription through pyrimidine-rich initiator (Inr) elements and E-box motifs. This gene has been linked to familial combined hyperlipidemia (FCHL). Alternative splicing of this gene results in multiple transcript variants. A related pseudogene has been defined on chromosome 21.

### Molecular Mass

33.5 kDa

### AA Sequence

MKGQQKTAETEEGTVQIQEGAVATGEDPTSVAIASIQSAATFPDPNVKYVFRTEGG  
QVMYRVIQVSEGQLDGQTEGTGAISGYPATQSMTQAVIQGAFTSDDAVDTEGTAAE  
THYTYFPSTAVGDGAGGTTSGSTAAVVTTQGSEALLGQATPPGTGQFFVMMSPQE  
VLQGSQRSIAPRTHPYSPKSEAPRTRRDEKRRAQHNEVERRRRDKINNWIWQLSKI  
IPDCSMESTKSGQSKGGILSKACDYIQELRQSNHRLSEELQGLDQLQLDNDVLRQQ  
VEDLKNKNLLLRAQLRHHGLEVVIKNDSNTRTRPLEQKLISEEDLAANDILDYKDDDD  
KV

Tel: 1-631-559-9269 1-516-512-3133

Email: [info@creative-biomart.com](mailto:info@creative-biomart.com) Fax: 1-631-938-8127

45-1 Ramsey Road, Shirley, NY 11967, USA

<b>Purity</b>	> 80% as determined by SDS-PAGE and Coomassie blue staining
<b>Stability</b>	Stable for 3 months from receipt of products under proper storage and handling conditions.
<b>Storage</b>	Store at -80 centigrade. Avoid repeated freeze-thaw cycles.
<b>Concentration</b>	50 µg/mL as determined by BCA
<b>Storage Buffer</b>	100 mM glycine, 25 mM Tris-HCl, pH 7.3.

## GENE INFORMATION

<b>Gene Name</b>	<a href="#">USF1 upstream transcription factor 1 [ Homo sapiens (human) ]</a>
<b>Official Symbol</b>	<a href="#">USF1</a>
<b>Synonyms</b>	USF1; upstream transcription factor 1; upstream stimulatory factor 1; bHLHb11; MLTF1; UEF; major late transcription factor 1; class B basic helix-loop-helix protein 11; FCHL; MLTF; FCHL1; HYPLIP1;
<b>Gene ID</b>	<a href="#">7391</a>
<b>mRNA Refseq</b>	<a href="#">NM_207005</a>
<b>Protein Refseq</b>	<a href="#">NP_996888</a>
<b>MIM</b>	<a href="#">191523</a>
<b>UniProt ID</b>	<a href="#">P22415</a>

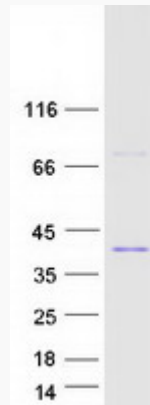
 Tel: 1-631-559-9269 1-516-512-3133

 Email: [info@creative-biomart.com](mailto:info@creative-biomart.com)  Fax: 1-631-938-8127

 45-1 Ramsey Road, Shirley, NY 11967, USA



**SDS-PAGE**



Tel: 1-631-559-9269 1-516-512-3133

Email: [info@creative-biomart.com](mailto:info@creative-biomart.com) Fax: 1-631-938-8127

45-1 Ramsey Road, Shirley, NY 11967, USA