

# Recombinant Full Length Human USO1 Protein, C-Flag-tagged

**Cat. No.** USO1-1756HFL    **Lot. No.** (See product label)

## SPECIFICATION

<b>Product Overview</b>	Recombinant Full Length Human USO1 Protein, fused to Flag-tag at C-terminus, was expressed in Mammalian cells.
<b>Species</b>	Human
<b>Source</b>	Mammalian Cells
<b>Description</b>	The protein encoded by this gene is a peripheral membrane protein which recycles between the cytosol and the Golgi apparatus during interphase. It is regulated by phosphorylation: dephosphorylated protein associates with the Golgi membrane and dissociates from the membrane upon phosphorylation. Ras-associated protein 1 recruits this protein to coat protein complex II (COPII) vesicles during budding from the endoplasmic reticulum, where it interacts with a set of COPII vesicle-associated SNAREs to form a cis-SNARE complex that promotes targeting to the Golgi apparatus. Alternative splicing results in multiple transcript variants.
<b>Form</b>	25 mM Tris HCl, pH 7.3, 100 mM glycine, 10% glycerol.
<b>Molecular Mass</b>	107.7 kDa
<b>AA Sequence</b>	MNFLRGVMGGQSAGPQHTEAETIQKLCDRVASSTLLDDRRNAVRALKSLSKKYRLE VGIQAMEHLIHVLQ TDRSDSEIIGYALDILYNIISNEEEEEVEENSTRQSEDLGSQFTEI FIKQQENVTLTLLSLLLEEFDFHVRW PGVKLLTSLKQLGQPQQIILVSPMGVSRLMDL LADSREVIRNDGVLLLQALTRSNGAIQKIVAFENAF ERLLDIISEEGNSDGGIVVEDCL ILLQNLLKNNNSNQNFKEGSYIQRMKPWFEVGDENSGWSAQKVTNL HLMLQLVR

 Tel: 1-631-559-9269    1-516-512-3133

 Email: [info@creative-biomart.com](mailto:info@creative-biomart.com)     Fax: 1-631-938-8127

 45-1 Ramsey Road, Shirley, NY 11967, USA

VLVSPTNPPGATSSCQKAMFQCGLLQQLCTILMATGVPADILTETINTVSEVIRGCQV  
 NQDY FASVNAPSNPPRPAIVLLMSMVNERQPFVLRCAVLYCFQCFLYKNQKGGQ  
 EIVSTLLPSTIDATGNSVS AGQLLCGGLFSTDSLNSWCAVALAHALQENATQKEQL  
 LRVQLATSIGNPPVSLQCTNILSQGSKIQT RVGLLMLLCTWLSNCPIAVTHFLHNS  
 ANVPFLTGQIAENLGEEELVQGLCALLLGISYFNDNSLESYM KEKLIKQIEKRIGKE  
 NFIEKLGFIKHELYSRASQKQPQNFPSPEYMIFDHEFTKLVKELEGVITKAIYK SSEE  
 DKKEEEVKKTLEQHDNIVTHYKNMIREQDLQLEELRQQVSTLKCQNEQLQTAVTQQ  
 VSQIQQHKDQ YNLLKIQLGKDNQHQGSYSEGAQMNGIQPEEIGRLREEIEELKRNQ  
 ELLQSQLTEKDSMIENMKSSQTSQ TNEQSSAIVSARDSEQVAELKQELATLKSQNL  
 SQSVEITKLQTEKQELLQKTEAFKSVQGETETIIA TKTTDVEGRLSALLQETKEL  
 KNEIKALSEERTAIKEQLDSSNSTIAILQTEKDKLELEITDSKKEQDDLL  
 VLLADQDQKILSLKNKLDLGHVVEEEDLESGDQEDEDDESEDPGKDLDHITRTRP  
 LEQKLISEEDLAANDILDYKDDDDKV

**Purity** > 80% as determined by SDS-PAGE and Coomassie blue staining.

**Stability** Stable for 12 months from the date of receipt of the product under proper storage and handling conditions. Avoid repeated freeze-thaw cycles.

**Storage** Store at -80 centigrade.

**Concentration** >50 ug/mL as determined by microplate BCA method.

**Preparation** Recombinant protein was captured through anti-DDK affinity column followed by conventional chromatography steps.

**Full Length** Full L.

## GENE INFORMATION

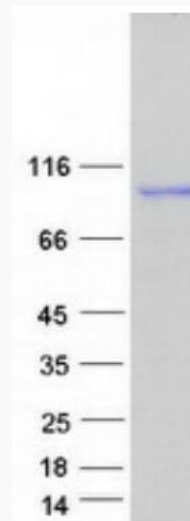
**Gene Name** [USO1](#) USO1 vesicle transport factor [ Homo sapiens (human) ]

 Tel: 1-631-559-9269 1-516-512-3133

 Email: [info@creative-biomart.com](mailto:info@creative-biomart.com)  Fax: 1-631-938-8127

 45-1 Ramsey Road, Shirley, NY 11967, USA

<b>Official Symbol</b>	USO1
<b>Synonyms</b>	TAP; VDP; P115
<b>Gene ID</b>	8615
<b>mRNA Refseq</b>	NM_003715.4
<b>Protein Refseq</b>	NP_003706.2
<b>MIM</b>	603344
<b>UniProt ID</b>	O60763



Coomassie blue staining of purified USO1 protein.

 Tel: 1-631-559-9269 1-516-512-3133

 Email: [info@creative-biomart.com](mailto:info@creative-biomart.com)  Fax: 1-631-938-8127

 45-1 Ramsey Road, Shirley, NY 11967, USA