

Active Recombinant human USP2 protein, FLAG-tagged

Cat. No. USP2-320H Lot. No. (See product label)

SPECIFICATION

Product Overview	Recombinant human USP2 protein, FLAG-tagged was expressed in baculovirus-infected Sf9 cell
Species	Human
Source	Sf9 Cells
ProteinLength	2-605(end)
Description	<p>This gene encodes a member of the family of de-ubiquitinating enzymes, which belongs to the peptidase C19 superfamily. The encoded protein is a ubiquitin-specific protease which is required for TNF-alpha (tumor necrosis factor alpha) -induced NF-kB (nuclear factor kB) signaling. This protein deubiquitinates polyubiquitinated target proteins such as fatty acid synthase, murine double minute 2 (MDM2), MDM4/MDMX and cyclin D1. MDM2 and MDM4 are negative regulators of the p53 tumor suppressor and cyclin D1 is required for cell cycle G1/S transition. Multiple alternatively spliced transcript variants encoding different isoforms have been identified.</p>
Form	Aqueous buffer solution
Bio-activity	8.9 pmole/min/g
Molecular Mass	69 kDa
Storage	At least 6 months at -80°C.

 Tel: 1-631-559-9269 1-516-512-3133

 Email: info@creative-biomart.com  Fax: 1-631-938-8127

 45-1 Ramsey Road, Shirley, NY 11967, USA

Storage Buffer	40mM Tris-HCl pH 8.0, 110 mM NaCl, 2.2 mM KCl, 3 mM DTT, 100ug/mL FLAG peptide and 20% glycerol.
Shipping	-80°C
Warning	Avoid freeze/thaw cycles. Storing diluted enzyme is not recommended, if necessary, use carrier protein BSA (0.1 – 0.5%).

GENE INFORMATION

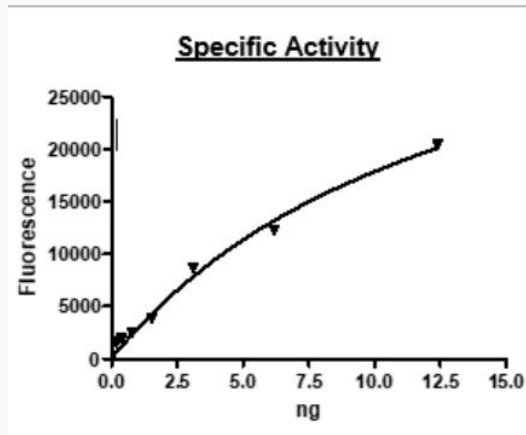
Gene Name	USP2 ubiquitin specific peptidase 2 [Homo sapiens (human)]
Official Symbol	USP2
Synonyms	Ubiquitin-Specific Protease 2, UPB41, USP-2
Gene ID	9099
mRNA Refseq	NM_004205
Protein Refseq	NP_004196.4
MIM	604725
UniProt ID	O75604

 Tel: 1-631-559-9269 1-516-512-3133

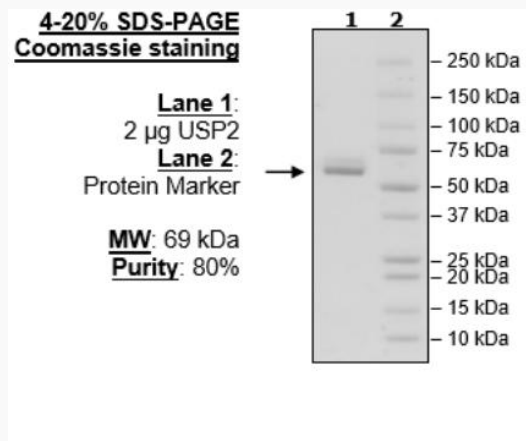
 Email: info@creative-biomart.com  Fax: 1-631-938-8127

 45-1 Ramsey Road, Shirley, NY 11967, USA

Specific Activity



**4-20% SDS-PAGE
Coomassie staining**



Tel: 1-631-559-9269 1-516-512-3133

Email: info@creative-biomart.com Fax: 1-631-938-8127

45-1 Ramsey Road, Shirley, NY 11967, USA