

Recombinant Mouse Ucp1 Protein, His-tagged

Cat. No. Ucp1-281M **Lot. No.** (See product label)

SPECIFICATION

Product Overview	Recombinant Mouse Ucp1(Pro179~Leu296) fused with His tag at N-terminal was expressed in E. coli.
Species	Mouse
Source	E.coli
ProteinLength	Pro179~Leu296
Form	20mM Tris, 150mM NaCl, pH8.0, containing 1mM EDTA, 1mM DTT, 0.01% SKL, 5% Trehalose and Proclin300.
Molecular Mass	14.5kDa
Endotoxin	<1.0EU per 1g (determined by the LAL method)
Purity	> 92%
Applications	Positive Control; Immunogen; SDS-PAGE; WB. If bio-activity of the protein is needed, please check active protein.
Stability	The thermal stability is described by the loss rate. The loss rate was determined by accelerated thermal degradation test, that is, incubate the protein at 37 centigrade for 48h, and no obvious degradation and precipitation were observed. The loss rate is less than 5% within the expiration date under appropriate storage condition.

 Tel: 1-631-559-9269 1-516-512-3133

 Email: info@creative-biomart.com  Fax: 1-631-938-8127

 45-1 Ramsey Road, Shirley, NY 11967, USA

Storage Avoid repeated freeze/thaw cycles. Store at 2-8 centigrade for one month. Aliquot and store at -80 centigrade for 12 months.

Reconstitution Reconstitute in 20mM Tris, 150mM NaCl (pH8.0) to a concentration of 0.1-1.0 mg/mL. Do not vortex.

GENE INFORMATION

Gene Name [Ucp1 uncoupling protein 1 \(mitochondrial, proton carrier\) \[Mus musculus \]](#)

Official Symbol [Ucp1](#)

Synonyms UCP1; uncoupling protein 1 (mitochondrial, proton carrier); mitochondrial brown fat uncoupling protein 1; UCP 1; thermogenin; solute carrier family 25 member 7; uncoupling protein, mitochondrial; uncoupling protein 1, mitochondrial; Ucp; Slc25a7; AI385626;

Gene ID [22227](#)

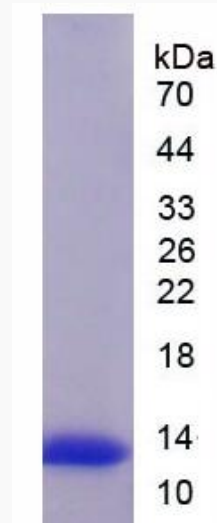
mRNA Refseq [NM_009463](#)

Protein Refseq [NP_033489](#)

 Tel: 1-631-559-9269 1-516-512-3133

 Email: info@creative-biomart.com  Fax: 1-631-938-8127

 45-1 Ramsey Road, Shirley, NY 11967, USA



 Tel: 1-631-559-9269 1-516-512-3133

 Email: info@creative-biomart.com  Fax: 1-631-938-8127

 45-1 Ramsey Road, Shirley, NY 11967, USA