

Recombinant Mouse Ush2A protein, His-tagged

Cat. No. Ush2A-6473M Lot. No. (See product label)

SPECIFICATION

Product Overview	Recombinant Mouse Ush2A protein(Q2QI47)(265-517aa), fused with N-terminal His tag, was expressed in E.coli.
Species	Mouse
Source	E.coli
ProteinLength	265-517aa
Form	If the delivery form is liquid, the default storage buffer is Tris/PBS-based buffer, 5%-50% glycerol. If the delivery form is lyophilized powder, the buffer before lyophilization is Tris/PBS-based buffer, 6% Trehalose, pH 8.0.
Molecular Mass	33.3 kDa
Purity	Greater than 90% as determined by SDS-PAGE.
Storage	Store at -20°C/-80°C upon receipt, aliquoting is necessary for mutiple use. Avoid repeated freeze-thaw cycles.
Reconstitution	We recommend that this vial be briefly centrifuged prior to opening to bring the contents to the bottom. Please reconstitute protein in deionized sterile water to a concentration of 0.1-1.0 mg/mL. We recommend to add 5-50% of glycerol (final concentration) and aliquot for long-term storage at -20°C/-80°C.

 Tel: 1-631-559-9269 1-516-512-3133

 Email: info@creative-biomart.com  Fax: 1-631-938-8127

 45-1 Ramsey Road, Shirley, NY 11967, USA

AA Sequence

GRMQDFRLYNVSLTNREILEVFSGDFPHLHIQPHCRCPGSHPRVHPSVQQYCIPNG
 AGDTPEHRMSRLNPEAHPLSFINDDDVATSWISHVFTNITQLYEGVAISIDLENGQYQ
 VLKVITQFSSLQPVAIRIQRKKADSSPWEDWQYFARNCSVWGMKDNELENPNSVN
 CLQLPDFIFFSHGNTFDLLTSGQKHRPGYNDFYNSSVLQEFMRATQIRLHFHGQYY
 PAGHTVDWRHQYYAVDEIIVSGRCQC

GENE INFORMATION
Gene Name

Ush2a Usher syndrome 2A (autosomal recessive, mild) homolog (human) [Mus musculus]

Official Symbol

Ush2A

Synonyms

USH2A; Usher syndrome 2A (autosomal recessive, mild) homolog (human); usherin; usher syndrome type-2A protein homolog; usher syndrome type IIa protein homolog; Gm676; Gm983; Mush2a; Usherin; A930011D15Rik; A930037M10Rik;

Gene ID

22283

mRNA Refseq

NM_021408

Protein Refseq

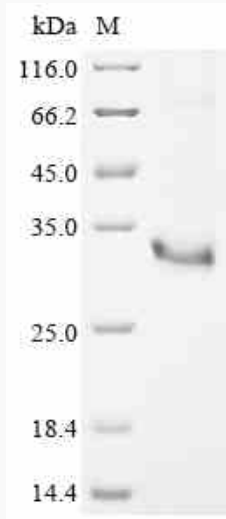
NP_067383

 Tel: 1-631-559-9269 1-516-512-3133

 Email: info@creative-biomart.com  Fax: 1-631-938-8127

 45-1 Ramsey Road, Shirley, NY 11967, USA

SDS-PAGE



 Tel: 1-631-559-9269 1-516-512-3133

 Email: info@creative-biomart.com  Fax: 1-631-938-8127

 45-1 Ramsey Road, Shirley, NY 11967, USA