

Recombinant Human ULBP1 Protein (Gly26-Pro215), C-Fc-tagged

Cat. No. VAC14-03H **Lot. No.** (See product label)

SPECIFICATION

Product Overview	Human VAC14 partial ORF (NP_060522.3, 714 a.a. - 782 a.a.) recombinant protein with GST-tag at N-terminal was expressed in Wheat Germ (in vitro).
Species	Human
Source	Wheat Germ
ProteinLength	714-782
Description	This gene encodes a scaffold protein that is a component of the PIKfyve protein kinase complex. This complex is responsible for the synthesis of phosphatidylinositol 3,5-bisphosphate, an important component of cellular membranes, from phosphatidylinositol 3-phosphate. Mice lacking a functional copy of this gene exhibit severe neurodegeneration. Mutations in the human gene have been identified in patients with a childhood onset progressive neurological disorder characterized by impaired movement, dystonia, and striatal abnormalities.
Molecular Mass	33.33 kDa
AA Sequence	SHRLQCVPNPELLQTEDSLKAAPKSQKADSPSIDYAELLQHFQKVNKHLEVRHQRSGRGDHLDRRVVL
Applications	Enzyme-linked Immunoabsorbent Assay Western Blot (Recombinant protein)

 Tel: 1-631-559-9269 1-516-512-3133

 Email: info@creative-biomart.com  Fax: 1-631-938-8127

 45-1 Ramsey Road, Shirley, NY 11967, USA

	Antibody Production Protein Array
Notes	Best use within three months from the date of receipt of this protein.
Storage	Store at -80 centigrade. Aliquot to avoid repeated freezing and thawing.
Storage Buffer	50 mM Tris-HCl, 10 mM reduced Glutathione, pH=8.0 in the elution buffer.
GENE INFORMATION	
Gene Name	VAC14 VAC14 component of PIKFYVE complex [Homo sapiens (human)]
Official Symbol	VAC14
Synonyms	VAC14; VAC14 component of PIKFYVE complex; TRX; TAX1BP2; ArPIKfyve; protein VAC14 homolog; Vac14, PIKFYVE complex component
Gene ID	55697
mRNA Refseq	NM_018052
Protein Refseq	NP_060522
MIM	604632
UniProt ID	Q08AM6

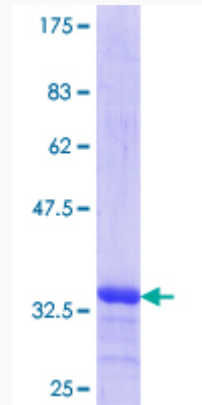
 Tel: 1-631-559-9269 1-516-512-3133

 Email: info@creative-biomart.com  Fax: 1-631-938-8127

 45-1 Ramsey Road, Shirley, NY 11967, USA



**Quality Control
Testing**



12.5% SDS-PAGE Stained with Coomassie Blue.

Tel: 1-631-559-9269 1-516-512-3133

Email: info@creative-biomart.com Fax: 1-631-938-8127

45-1 Ramsey Road, Shirley, NY 11967, USA