

Recombinant Human VAMP1 Protein, Myc/DDK-tagged, C13 and N15-labeled

Cat. No. VAMP1-565H Lot. No. (See product label)

SPECIFICATION

Product Overview	VAMP1 MS Standard C13 and N15-labeled recombinant protein (NP_055046) with a C-terminal MYC/DDK tag, was expressed in HEK293 cells.
Species	Human
Source	HEK293
Description	Synaptobrevins, syntaxins, and the synaptosomal-associated protein SNAP25 are the main components of a protein complex involved in the docking and/or fusion of synaptic vesicles with the presynaptic membrane. The protein encoded by this gene is a member of the vesicle-associated membrane protein (VAMP)/synaptobrevin family. Mutations in this gene are associated with autosomal dominant spastic ataxia 1. Multiple alternative splice variants have been described, but the full-length nature of some variants has not been defined.
Molecular Mass	12.7 kDa
AA Sequence	MSAPAQPPAEGTEGTAPGGGPPGPPPNMTSNRRLQQTQAQVEEVVDIIRVNVDKV LERDQKLSELDDRADALQAGASQFESSAAKLKRKYWWKNCKMMIMLGAICAIIVVVI VIYFFTRTRTRPLEQKLISEEDLAANDILDYKDDDDKV
Purity	> 80% as determined by SDS-PAGE and Coomassie blue staining
Stability	Stable for 3 months from receipt of products under proper storage and handling

 Tel: 1-631-559-9269 1-516-512-3133

 Email: info@creative-biomart.com  Fax: 1-631-938-8127

 45-1 Ramsey Road, Shirley, NY 11967, USA

conditions.

Storage Store at -80 centigrade. Avoid repeated freeze-thaw cycles.

Concentration 50 µg/mL as determined by BCA

Storage Buffer 100 mM glycine, 25 mM Tris-HCl, pH 7.3.

GENE INFORMATION

Gene Name VAMP1 vesicle associated membrane protein 1 [Homo sapiens (human)]

Official Symbol VAMP1

Synonyms VAMP1; vesicle-associated membrane protein 1 (synaptobrevin 1); SYB1; vesicle-associated membrane protein 1; VAMP 1; synaptobrevin 1; synaptobrevin-1; VAMP-1; DKFZp686H12131;

Gene ID 6843

mRNA Refseq NM_014231

Protein Refseq NP_055046

MIM 185880

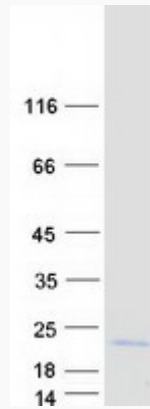
UniProt ID P23763

 Tel: 1-631-559-9269 1-516-512-3133

 Email: info@creative-biomart.com  Fax: 1-631-938-8127

 45-1 Ramsey Road, Shirley, NY 11967, USA

SDS-PAGE



 Tel: 1-631-559-9269 1-516-512-3133

 Email: info@creative-biomart.com  Fax: 1-631-938-8127

 45-1 Ramsey Road, Shirley, NY 11967, USA