

Recombinant Human VAMP8 Protein, His&GST-tagged

Cat. No. VAMP8-546H Lot. No. (See product label)

SPECIFICATION

Product Overview	Recombinant Human VAMP8 Protein (Met1-Ser100) with N-His&GST tag was expressed in E. coli.
Species	Human
Source	E.coli
ProteinLength	Met1-Ser100
Description	This gene encodes an integral membrane protein that belongs to the synaptobrevin/v esicle-associated membrane protein subfamily of soluble N-ethylmaleimide-sensitive f actor attachment protein receptors (SNAREs). The encoded protein is involved in the fusion of synaptic vesicles with the presynaptic membrane.
Form	Freeze-dried powder
Molecular Mass	Predicted Molecular Mass: 41.4 kDa Accurate Molecular Mass: 43 kDa
Purity	> 80%
Applications	Positive Control; Immunogen; SDS-PAGE; WB.
Stability	The thermal stability is described by the loss rate. The loss rate was determined by accelerated thermal degradation test, that is, incubate the protein at 37 centigrade for

 Tel: 1-631-559-9269 1-516-512-3133

 Email: info@creative-biomart.com  Fax: 1-631-938-8127

 45-1 Ramsey Road, Shirley, NY 11967, USA

48h, and no obvious degradation and precipitation were observed. The loss rate is less than 5% within the expiration date under appropriate storage condition.

Storage

Avoid repeated freeze/thaw cycles. Store at 2-8 centigrade for one month. Aliquot and store at -80 centigrade for 12 months.

Storage Buffer

20mM Tris, 150mM NaCl, pH8.0, containing 1mM EDTA, 1mM DTT, 0.01% SKL, 5% Trehalose and Proclin300.

Reconstitution

Reconstitute in sterile water to a concentration of 0.1-1.0 mg/mL. Do not vortex.

GENE INFORMATION

Gene Name

VAMP8 vesicle-associated membrane protein 8 (endobrevin) [Homo sapiens (human)]

Official Symbol

VAMP8

Synonyms

VAMP8; vesicle-associated membrane protein 8 (endobrevin); vesicle-associated membrane protein 8; EDB; VAMP-8

Gene ID

8673

mRNA Refseq

NM_003761

Protein Refseq

NP_003752

MIM

603177

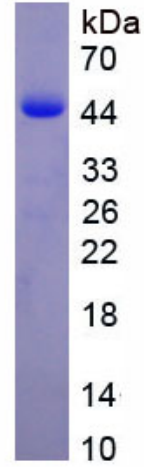
UniProt ID


Q9BV40

 Tel: 1-631-559-9269 1-516-512-3133


 Email: info@creative-biomart.com  Fax: 1-631-938-8127

 45-1 Ramsey Road, Shirley, NY 11967, USA



 Tel: 1-631-559-9269 1-516-512-3133

 Email: info@creative-biomart.com  Fax: 1-631-938-8127

 45-1 Ramsey Road, Shirley, NY 11967, USA