

Recombinant Human VAT1L Protein, Myc/DDK-tagged, C13 and N15-labeled

Cat. No. VAT1L-5923H **Lot. No.** (See product label)

SPECIFICATION

Product Overview	VAT1L MS Standard C13 and N15-labeled recombinant protein (NP_065978) with a C-terminal MYC/DDK tag, was expressed in HEK293 cells.
Species	Human
Source	HEK293
Description	Belongs to the zinc-containing alcohol dehydrogenase family. Quinone oxidoreductase subfamily.
Molecular Mass	45.9 kDa
AA Sequence	<p>MAKEGVEKAEETEQMIEKEAGKEPAEGGGGDGSHRLGDAQEMRAVVLGFGGLN KLRLFRKAMPEPQDGELKIRVKACGLNFIDLMVRQGNIDNPPKTPLVPGFECGIVEA LGDSVKGYEIGDRVMAFVNYNAAEVEVCTPVEFVYKIPDDMSFSEAAAFPMNFVTA YVMLFEVANLREGMSVLVHSAGGGVQQAVALCSTVPNVTVFGTASTFKHEAIKDS VTHLFDNRADYVQEVKRISAEGVDIVLDCDNTGKGLSLLKPLGTIYLYGSSNMVT GETKSFFSFAKSWWQVEKVNPIKLYEENKVIAGFSLNLLFKQGRAGLIRGVVEKLIG LYNQKKIKPVVDSLWALEEVKEAMQRIHDRGNIGKLILDVEKTPTPLMANDSTETSEA GEEEDHEGDSENKERMPFIQTRTRPLEQKLISEEDLAANDILDYKDDDDKV</p>
Purity	> 80% as determined by SDS-PAGE and Coomassie blue staining
Stability	Stable for 3 months from receipt of products under proper storage and handling

 Tel: 1-631-559-9269 1-516-512-3133

 Email: info@creative-biomart.com  Fax: 1-631-938-8127

 45-1 Ramsey Road, Shirley, NY 11967, USA

conditions.

Storage Store at -80 centigrade. Avoid repeated freeze-thaw cycles.

Concentration 50 µg/mL as determined by BCA

Storage Buffer 100 mM glycine, 25 mM Tris-HCl, pH 7.3.

GENE INFORMATION

Gene Name VAT1L vesicle amine transport 1 like [Homo sapiens (human)]

Official Symbol VAT1L

Synonyms VAT1L; vesicle amine transport protein 1 homolog (T. californica)-like; synaptic vesicle membrane protein VAT-1 homolog-like; KIAA1576; vesicle amine transport protein 1 homolog-like (T. californica);

Gene ID 57687

mRNA Refseq NM_020927

Protein Refseq NP_065978

UniProt ID Q9HCJ6

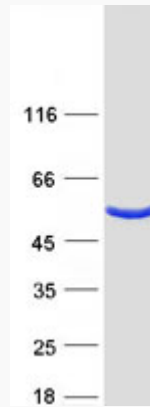
 Tel: 1-631-559-9269 1-516-512-3133

 Email: info@creative-biomart.com  Fax: 1-631-938-8127

 45-1 Ramsey Road, Shirley, NY 11967, USA



SDS-PAGE



Tel: 1-631-559-9269 1-516-512-3133

Email: info@creative-biomart.com Fax: 1-631-938-8127

45-1 Ramsey Road, Shirley, NY 11967, USA