

Recombinant Human VBP1 Protein, Myc/DDK-tagged, C13 and N15-labeled

Cat. No. VBP1-5875H **Lot. No.** (See product label)

SPECIFICATION

Product Overview	VBP1 MS Standard C13 and N15-labeled recombinant protein (NP_003363) with a C-terminal MYC/DDK tag, was expressed in HEK293 cells.
Species	Human
Source	HEK293
Description	The protein encoded by this gene interacts with the Von Hippel-Lindau protein to form an intracellular complex. The encoded protein functions as a chaperone protein, and may play a role in the transport of the Von Hippel-Lindau protein from the perinuclear granules to the nucleus or cytoplasm. Alternative splicing and the use of alternate transcription start sites results in multiple transcript variants encoding different protein isoforms.
Molecular Mass	22.6 kDa
AA Sequence	MAAVKDSCGKGMATGNRRLLHLGIPEAVFVEDVDSFMKQPGNETADTVLKKLDE QYQKYKFMELNLAQKKRRLKQIPEIKQTLEILKYMQKKKESTNSMETRFLADNLY CKASVPPTDKVCLWLGANVMLEYDIDEAQALLEKNLSTATKNLDSLEEDLDFLRDQF TTTEVNMARVYNWDVKRRNKDDSTKNKATRTRPLEQKLISEEDLAANDILDYKDDD DKV
Purity	> 80% as determined by SDS-PAGE and Coomassie blue staining

 Tel: 1-631-559-9269 1-516-512-3133

 Email: info@creative-biomart.com  Fax: 1-631-938-8127

 45-1 Ramsey Road, Shirley, NY 11967, USA

Stability	Stable for 3 months from receipt of products under proper storage and handling conditions.
Storage	Store at -80 centigrade. Avoid repeated freeze-thaw cycles.
Concentration	50 µg/mL as determined by BCA
Storage Buffer	100 mM glycine, 25 mM Tris-HCl, pH 7.3.

GENE INFORMATION

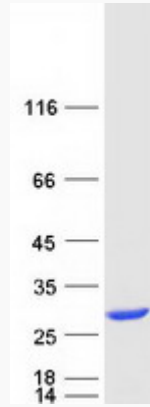
Gene Name	VBP1 von Hippel-Lindau binding protein 1 [Homo sapiens (human)]
Official Symbol	VBP1
Synonyms	VBP1; von Hippel-Lindau binding protein 1; prefoldin subunit 3; PFD3; PFDN3; prefoldin 3; HIBBJ46; VHL binding protein-1; VHL-binding protein 1; von Hippel-Lindau-binding protein 1; VBP-1;
Gene ID	7411
mRNA Refseq	NM_003372
Protein Refseq	NP_003363
MIM	300133
UniProt ID	P61758

 Tel: 1-631-559-9269 1-516-512-3133

 Email: info@creative-biomart.com  Fax: 1-631-938-8127

 45-1 Ramsey Road, Shirley, NY 11967, USA

SDS-PAGE



 Tel: 1-631-559-9269 1-516-512-3133

 Email: info@creative-biomart.com  Fax: 1-631-938-8127

 45-1 Ramsey Road, Shirley, NY 11967, USA