

Recombinant Full Length Human VCAM1 Protein, C-Flag-tagged

Cat. No. VCAM1-1473HFL **Lot. No.** (See product label)

SPECIFICATION

Product Overview	Recombinant Full Length Human VCAM1 Protein, fused to Flag-tag at C-terminus, was expressed in Mammalian cells.
Species	Human
Source	Mammalian Cells
Description	This gene is a member of the Ig superfamily and encodes a cell surface sialoglycoprotein expressed by cytokine-activated endothelium. This type I membrane protein mediates leukocyte-endothelial cell adhesion and signal transduction, and may play a role in the development of atherosclerosis and rheumatoid arthritis. Three alternatively spliced transcripts encoding different isoforms have been described for this gene.
Form	25 mM Tris HCl, pH 7.3, 100 mM glycine, 10% glycerol.
Molecular Mass	78.7 kDa
AA Sequence	MPGKMMVILGASNILWIMFAASQAFKIETTPESRYLAQIGDSVSLTCSTTGCESPFFS WRTQIDSPLNGK VTNEGTTSTLTMNPVVSFGNEHSYLCTATCESRKLEKGIQVEIYSF PKDPEIHLSPLEAGKPITVKCSVA DVYPPFDRLEIDLLKGDHLMKSQEFLEDADRKSL ETKSLEVTFTPVIEDIGKVLVCRAKLHIDEMDSVPTV RQAVKELQVYISPKNTVISVNP STKLQEGGSVTMTCSSEGLPAPEIFWSKKLDNGNLQHLSGNATLTLIA MRMEDSGI YVCEGVNLIQGNRKEVELIVQEKPFVTEISPGPRIAAQIGDSVMLTCSVMGCESPSFS

 Tel: 1-631-559-9269 1-516-512-3133

 Email: info@creative-biomart.com  Fax: 1-631-938-8127

 45-1 Ramsey Road, Shirley, NY 11967, USA

WRTQ IDSPLSGKVRSEGTNSTLTLSPVSVFENEHSYLCTVTCGHKKLEKGIQVELYSF
 PRDPEIEMSGGLVNGSS VTVSCKVPSVYPLDRLEIELLKGETILENIEFLEDTDMKSL
 ENKSLEMTFIPTIEDTGKALVCQAKLHID DMEFEPKQRQSTQTLYVNVAPRDTTVLV
 SPSSILEEGSSVNMTCLSQGFPAKILWSRQLPNGELQPLSE NATLTLISTKMEDSG
 VYLCEGINQAGRSRKEVELIIQVTPKDIKLTAFPSSESVKEGDTVIIISCTCGNVPE TWIIL
 KKAETGDTVLSIDGAYTIRKAQLKDAGVYECESKNKVGSQRLSLTLDVQGRENNK
 DYFSPELL
 VLYFASSLIIPAIGMIIYFARKANMKGSYSLVEAQKSKVTRTRPLEQKLISEEDLAANDI
 LDYKDDDDKV

Purity	> 80% as determined by SDS-PAGE and Coomassie blue staining.
Stability	Stable for 12 months from the date of receipt of the product under proper storage and handling conditions. Avoid repeated freeze-thaw cycles.
Storage	Store at -80 centigrade.
Concentration	>50 ug/mL as determined by microplate BCA method.
Preparation	Recombinant protein was captured through anti-DDK affinity column followed by conventional chromatography steps.
Protein Families	Druggable Genome, ES Cell Differentiation/IPS, Transmembrane
Protein Pathways	Cell adhesion molecules (CAMs), Leukocyte transendothelial migration
Full Length	Full L.

GENE INFORMATION

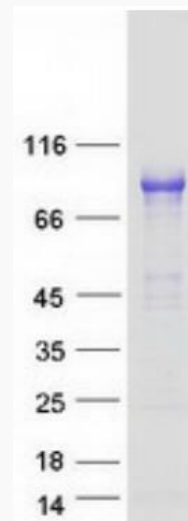
Gene Name [VCAM1 vascular cell adhesion molecule 1 \[Homo sapiens \(human\) \]](#)

 Tel: 1-631-559-9269 1-516-512-3133

 Email: info@creative-biomart.com  Fax: 1-631-938-8127

 45-1 Ramsey Road, Shirley, NY 11967, USA

Official Symbol	VCAM1
Synonyms	CD106; INCAM-100
Gene ID	7412
mRNA Refseq	NM_001078.4
Protein Refseq	NP_001069.1
MIM	192225
UniProt ID	P19320



Coomassie blue staining of purified VCAM1 protein.

 Tel: 1-631-559-9269 1-516-512-3133

 Email: info@creative-biomart.com  Fax: 1-631-938-8127

 45-1 Ramsey Road, Shirley, NY 11967, USA