

# Recombinant Human VCAM1 Protein, Myc/DDK-tagged, C13 and N15-labeled

Cat. No. VCAM1-1534H Lot. No. (See product label)

## SPECIFICATION

### Product Overview

VCAM1 MS Standard C13 and N15-labeled recombinant protein (NP\_001069) with a C-terminal MYC/DDK tag, was expressed in HEK293 cells.

### Species

Human

### Source

HEK293

### Description

This gene is a member of the Ig superfamily and encodes a cell surface sialoglycoprotein expressed by cytokine-activated endothelium. This type I membrane protein mediates leukocyte-endothelial cell adhesion and signal transduction, and may play a role in the development of atherosclerosis and rheumatoid arthritis. Three alternatively spliced transcripts encoding different isoforms have been described for this gene.

### Molecular Mass

81.3 kDa

### AA Sequence

MPGKMVVILGASNILWIMFAASQAFKIETTPESRYLAQIGDSVSLTCSTTGCESPFFS  
 WRTQIDSPLNGKVTNEGTTSTLTMNPVSFGNEHSYLCTATCESRKLEKGIQVEIYSF  
 PKDPEIHLSGPLEAGKPITVKCSVADVYPFDRLEIDLLKGDHLMKSQEFLEDADRKSL  
 ETKSLEVTFTPVIEDIGKVLVCRAKLHIDEMDSVPTVRQAVKELQVYISPKNTVISVNP  
 STKLQEGGSVTMTCSSEGLPAPEIFWSKKLDNGNLQHLSGNATLTLIAMRMEDSGIY  
 VCEGVNLIGKNRKEVELIVQEKPFTVEISPGPRIAAQIGDSVMLTCSVMGCESPSFSW  
 RTQIDSPLSGKVRSEGTNSTLTLSPVSFENEHSYLCTVTCGHKKLEKGIQVELYSFPR

Tel: 1-631-559-9269 1-516-512-3133

Email: [info@creative-biomart.com](mailto:info@creative-biomart.com) Fax: 1-631-938-8127

45-1 Ramsey Road, Shirley, NY 11967, USA

DPEIEMSGGLVNGSSVTVSCKVPSVYPLDRLEIELLKGETILENIEFLEDTDMKSLENK  
 SLEMTFIPTIEDTGKALVCQAKLHIDDMEFEPKQRQSTQTLVYVNVAPRDTTVLVSPSS  
 ILEEGSSVNMTCLSQGFPAPKILWSRQLPNGELQPLSENATLTLISTKMEDSGVYLCE  
 GINQAGRSRKEVELIQVTPKDIKLTAFPSSEVKEGDTVIIISCTCGNVPETWILKKKAE  
 TGDTVLSIDGAYTIRKAQLKDAGVYECESKNKVGSQLRSLTLDVQGRENNKDYFSP  
 ELLVLYFASLIIPAIGMIIYFARKANMKGSYSLVEAQKSKVTRTRPLEQKLISEEDLAA  
 NDILDYKDDDDKV

**Purity** > 80% as determined by SDS-PAGE and Coomassie blue staining

**Stability** Stable for 3 months from receipt of products under proper storage and handling conditions.

**Storage** Store at -80 centigrade. Avoid repeated freeze-thaw cycles.

**Concentration** 50 µg/mL as determined by BCA

**Storage Buffer** 100 mM glycine, 25 mM Tris-HCl, pH 7.3.

## GENE INFORMATION

**Gene Name** [VCAM1 vascular cell adhesion molecule 1 \[ Homo sapiens \(human\) \]](#)

**Official Symbol** [VCAM1](#)

**Synonyms** VCAM1; vascular cell adhesion molecule 1; vascular cell adhesion protein 1; CD106; CD106 antigen; INCAM-100; MGC99561; DKFZp779G2333;

**Gene ID** [7412](#)

**mRNA Refseq** [NM\\_001078](#)

 Tel: 1-631-559-9269 1-516-512-3133

 Email: [info@creative-biomart.com](mailto:info@creative-biomart.com)  Fax: 1-631-938-8127

 45-1 Ramsey Road, Shirley, NY 11967, USA

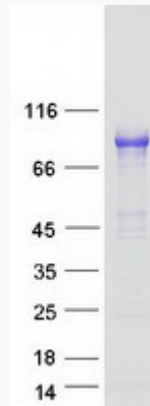


**Protein Refseq** NP\_001069

**MIM** 192225

**UniProt ID** P19320

**SDS-PAGE**



Tel: 1-631-559-9269 1-516-512-3133

Email: [info@creative-biomart.com](mailto:info@creative-biomart.com) Fax: 1-631-938-8127

45-1 Ramsey Road, Shirley, NY 11967, USA