

Recombinant Rhesus monkey VCAM1 protein, His & T7-tagged

Cat. No. VCAM1-2775R Lot. No. (See product label)

SPECIFICATION

| | |
|-------------------------|---|
| Product Overview | Recombinant Rhesus monkey VCAM1 aa. (Leu1~Asp81) fused with N-terminal His & T7 tag was produced in E. coli cells. |
| Species | Rhesus macaque |
| Source | E.coli |
| ProteinLength | Leu1~Asp81 |
| Form | Freeze-dried powder |
| Molecular Mass | Predicted Molecular Mass: 13.2kDa |
| Endotoxin | <1.0EU per 1g (determined by the LAL method) |
| Purity | >90% |
| Characteristic | The isoelectric point is 5.5. |
| Applications | SDS-PAGE; WB; ELISA; IP. |
| Stability | The thermal stability is described by the loss rate. The loss rate was determined by accelerated thermal degradation test, that is, incubate the protein at 37°C for 48h, and no obvious degradation and precipitation were observed. The loss rate is less than 5% within the expiration date under appropriate storage condition. |

 Tel: 1-631-559-9269 1-516-512-3133

 Email: info@creative-biomart.com  Fax: 1-631-938-8127

 45-1 Ramsey Road, Shirley, NY 11967, USA

| | |
|----------------|--|
| Storage | Avoid repeated freeze/thaw cycles. Store at 2-8°C for one month. Aliquot and store at -80°C for 12 months. |
|----------------|--|

| | |
|-----------------------|---|
| Storage buffer | Supplied as lyophilized form in 20mM Tris, 150mM NaCl, pH8.0, containing 1mM EDTA, 1mM DTT, 0.01% sarcosyl, 5% trehalose, and preservative. |
|-----------------------|---|

| | |
|-----------------------|---|
| Reconstitution | Reconstitute in sterile ddH ₂ O. |
|-----------------------|---|

GENE INFORMATION

| | |
|------------------|---|
| Gene Name | VCAM1 vascular cell adhesion molecule 1 [<i>Macaca mulatta</i> (Rhesus monkey)] |
|------------------|---|

| | |
|------------------------|-------|
| Official Symbol | VCAM1 |
|------------------------|-------|

| | |
|-----------------|----------------------------------|
| Synonyms | vascular cell adhesion protein 1 |
|-----------------|----------------------------------|

| | |
|----------------|--------|
| Gene ID | 712036 |
|----------------|--------|

| | |
|--------------------|----------------|
| mRNA Refseq | XM_001107924.3 |
|--------------------|----------------|

| | |
|-----------------------|----------------|
| Protein Refseq | XP_001107924.1 |
|-----------------------|----------------|

| | |
|-------------------|------------|
| UniProt ID | A0A1D5RJM5 |
|-------------------|------------|

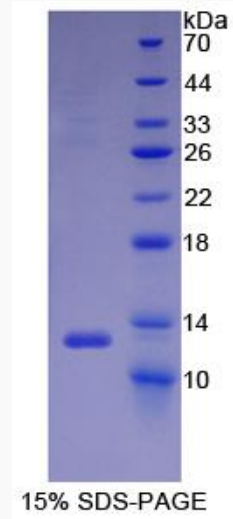
 Tel: 1-631-559-9269 1-516-512-3133

 Email: info@creative-biomart.com  Fax: 1-631-938-8127

 45-1 Ramsey Road, Shirley, NY 11967, USA



SDS-PAGE



Tel: 1-631-559-9269 1-516-512-3133

Email: info@creative-biomart.com Fax: 1-631-938-8127

45-1 Ramsey Road, Shirley, NY 11967, USA