

Recombinant Human VCAM1 Protein, His-tagged

Cat. No. VCAM1-30923TH **Lot. No.** (See product label)

SPECIFICATION

Product Overview	Recombinant Human VCAM1(25-698aa) fused with His tag at N-terminal was expressed in E. coli.
Species	Human
Source	E.coli
ProteinLength	25-698aa
Description	VCAM1 is a member of the Ig superfamily and is a cell surface sialoglycoprotein expressed by cytokine-activated endothelium. This type I membrane protein mediates leukocyte-endothelial cell adhesion and signal transduction, and may play a role in the development of atherosclerosis and rheumatoid arthritis.
Form	Liquid. In 20mM Tris-HCl buffer (pH 8.0) containing 10% glycerol
Molecular Mass	76 kDa (695aa)
Purity	> 80% by SDS - PAGE
Applications	SDS-PAGE
Storage	Can be stored at +4 centigrade short term (1-2 weeks). For long term storage, aliquot and store at -20 centigrade or -70 centigrade. Avoid repeated freezing and thawing cycles.

 Tel: 1-631-559-9269 1-516-512-3133

 Email: info@creative-biomart.com  Fax: 1-631-938-8127

 45-1 Ramsey Road, Shirley, NY 11967, USA

Concentration 0.25 mg/ml (determined by Bradford assay)

GENE INFORMATION

Gene Name VCAM1 vascular cell adhesion molecule 1 [Homo sapiens]

Official Symbol VCAM1

Synonyms VCAM1; vascular cell adhesion molecule 1; vascular cell adhesion protein 1; CD106; CD106 antigen; INCAM-100; MGC99561; DKFZp779G2333;

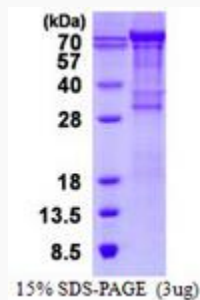
Gene ID 7412

mRNA Refseq NM_001078

Protein Refseq NP_001069

MIM 192225

UniProt ID P19320



 Tel: 1-631-559-9269 1-516-512-3133

 Email: info@creative-biomart.com  Fax: 1-631-938-8127

 45-1 Ramsey Road, Shirley, NY 11967, USA