

Active Recombinant Human VCAM1 protein, His tagged

Cat. No. VCAM1-3142H Lot. No. (See product label)

SPECIFICATION

Product Overview	Active Recombinant Human VCAM1 protein(Phe 25-Pro 697)(NP_001069.1) was expressed in Human Cells, fused with a polyhistidine tag at the N-terminus.
Species	Human
Source	Human Cells
ProteinLength	25-697 aa
Form	Lyophilized from sterile PBS, pH 7.4.
Bio-activity	Measured by the ability of the immobilized protein to support the adhesion of U937 human histiocytic lymphoma cells. When cells are added to VCAM1 coated plates (40 µg/mL, 100 µL/well) approximately 30%-70% will adhere for 1 hour incubation at 37°C.
Molecular Mass	The recombinant human VCAM1 consists of 689 amino acids and predicts a molecular mass of 76 kDa. As a result of glycosylation, rhVCAM1 migrates as an approximately 110 kDa band in SDS-PAGE under reducing conditions.
Endotoxin	< 1.0 EU per µg of the protein as determined by the LAL method.
Purity	> 95 % as determined by SDS-PAGE
Storage	Store it under sterile conditions at -20°C to -80°C upon receiving. Recommend to

 Tel: 1-631-559-9269 1-516-512-3133

 Email: info@creative-biomart.com  Fax: 1-631-938-8127

 45-1 Ramsey Road, Shirley, NY 11967, USA

aliquot the protein into smaller quantities for optimal storage. Avoid repeated freeze-thaw cycles.

Reconstitution

It is recommended that sterile water be added to the vial to prepare a stock solution of 0.2 ug/ul. Centrifuge the vial at 4°C before opening to recover the entire contents.

GENE INFORMATION

Gene Name [VCAM1 vascular cell adhesion molecule 1 \[Homo sapiens \]](#)

Official Symbol [VCAM1](#)

Synonyms VCAM1; vascular cell adhesion molecule 1; vascular cell adhesion protein 1; CD106; CD106 antigen; INCAM-100; MGC99561; DKFZp779G2333;

Gene ID [7412](#)

mRNA Refseq [NM_001078](#)

Protein Refseq [NP_001069](#)

MIM [192225](#)

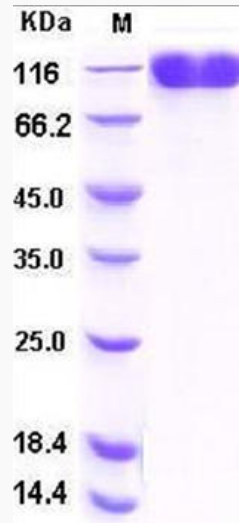
UniProt ID [P19320](#)

 Tel: 1-631-559-9269 1-516-512-3133

 Email: info@creative-biomart.com  Fax: 1-631-938-8127

 45-1 Ramsey Road, Shirley, NY 11967, USA

SDS-PAGE



 Tel: 1-631-559-9269 1-516-512-3133

 Email: info@creative-biomart.com  Fax: 1-631-938-8127

 45-1 Ramsey Road, Shirley, NY 11967, USA