

Recombinant Human VCAM1 Protein, Myc/DDK-tagged, C13 and N15-labeled

Cat. No. VCAM1-5262H Lot. No. (See product label)

SPECIFICATION

Product Overview

VCAM1 MS Standard C13 and N15-labeled recombinant protein (NP_542413) with a C-terminal MYC/DDK tag, was expressed in HEK293 cells.

Species

Human

Source

HEK293

Description

This gene is a member of the Ig superfamily and encodes a cell surface sialoglycoprotein expressed by cytokine-activated endothelium. This type I membrane protein mediates leukocyte-endothelial cell adhesion and signal transduction, and may play a role in the development of atherosclerosis and rheumatoid arthritis. Three alternatively spliced transcripts encoding different isoforms have been described for this gene.

Molecular Mass

71.3 kDa

AA Sequence

MPGKMVVILGASNILWIMFAASQAFKIETTPESRYLAQIGDSVSLTCSTTGCEPFFS
 WRTQIDSPLNGKVTNEGTTSTLTMNPVSFGNEHSYLCTATCESRKLEKGIQVEIYSF
 PKDPEIHLSGPLEAGKPITVKCSVADVYPFDRLEIDLLKGDHLMKSQEFLEDADRKSL
 ETKSLEVTFTPVIEDIGKVLVCRAKLHIDEMDSVPTVRQAVKELQVYISPKNTVISVNP
 STKLQEGGSVTMTCSSEGLPAPEIFWSKKLDNGNLQHLSGNATLTLIAMRMEDSGIY
 VCEGVNLIGKNRKEVELIVQAFPRDPEIEMSGGLVNGSSVTVSCKVPSVYPLDRLEIE
 LLKGETILENIEFLEDTDMKSLENKSLEMTFIPTIEDTGKALVCQAKLHIDMEFEPKQ

 Tel: 1-631-559-9269 1-516-512-3133

 Email: info@creative-biomart.com  Fax: 1-631-938-8127

 45-1 Ramsey Road, Shirley, NY 11967, USA

RQSTQTLVNVAPRDTTVLVSPSSILEEGSSVNMTCLSQGFPAPKILWSRQLPNGEL
 QPLSENATLTLISTKMEDSGVYLCEGINQAGRSRKEVELIIQVTPKDIKLTAFPSESVK
 EGDTVIIISCTCGNVPETWIIKKKAETGDTVLSIDGAYTIRKAQLKDAGVYECESKNK
 VGSQLRSLTLDVQGRENNKDYFSPELLVLYFASLIIPAIGMIYFARKANMKGSYSLV
 EAQKSKVTRTRPLEQKLISEEDLAANDILDYKDDDDKV

Purity > 80% as determined by SDS-PAGE and Coomassie blue staining

Stability Stable for 3 months from receipt of products under proper storage and handling conditions.

Storage Store at -80 centigrade. Avoid repeated freeze-thaw cycles.

Concentration 50 µg/mL as determined by BCA

Storage Buffer 100 mM glycine, 25 mM Tris-HCl, pH 7.3.

GENE INFORMATION

Gene Name [VCAM1 vascular cell adhesion molecule 1 \[Homo sapiens \(human\) \]](#)

Official Symbol [VCAM1](#)

Synonyms VCAM1; vascular cell adhesion molecule 1; vascular cell adhesion protein 1; CD106; CD106 antigen; INCAM-100; MGC99561; DKFZp779G2333;

Gene ID [7412](#)

mRNA Refseq [NM_080682](#)

Protein Refseq [NP_542413](#)

 Tel: 1-631-559-9269 1-516-512-3133

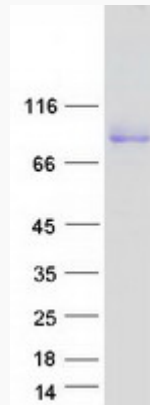
 Email: info@creative-biomart.com  Fax: 1-631-938-8127

 45-1 Ramsey Road, Shirley, NY 11967, USA

MIM 192225

UniProt ID P19320

SDS-PAGE



 Tel: 1-631-559-9269 1-516-512-3133

 Email: info@creative-biomart.com  Fax: 1-631-938-8127

 45-1 Ramsey Road, Shirley, NY 11967, USA