

Active Recombinant Human VCAM1 Protein, His-tagged, Bioactivity Validated

Cat. No. VCAM1-68H Lot. No. (See product label)

SPECIFICATION

Product Overview

Recombinant Human VCAM1(25-698aa) fused with His tag at C-terminal was expressed in Insect cells. Bioactivity Validated.

Species

Human

Source

Insect Cells

ProteinLength

25-698aa

Description

VCAM1, also known as vascular cell adhesion protein 1 isoform, a member of the immunoglobulin superfamily. It is a cell surface protein expressed by activated endothelial cells and certain leukocytes. VCAM1 expression is induced on endothelial cells during inflammatory bowel disease, atherosclerosis, allograft rejection and asthmatic responses. During the inflammatory adhesion mechanism, activated integrins that rolling leukocytes and attach them firmly to the vascular endothelium.

Form

Liquid. In Phosphate Buffered Saline (pH 7.4) containing 10% glycerol.

Bio-activity

Measured by the ability of the immobilized protein to support the adhesion of U937 Human histiocytic lymphoma cells. When cells are added to VCAM1 coated plates 10ug/ml. This effect is more to 70%.

Molecular Mass

75.6kDa (685aa) 70-100KDa (SDS-PAGE under reducing conditions)

 Tel: 1-631-559-9269 1-516-512-3133

 Email: info@creative-biomart.com  Fax: 1-631-938-8127

 45-1 Ramsey Road, Shirley, NY 11967, USA

Endotoxin	< 1.0 EU per 1 microgram of protein (determined by LAL method)
Purity	> 90% by SDS - PAGE
Storage	Can be stored at + 4 centigrade short term (1-2 weeks). For long term storage, aliquot and store at -20 centigrade or -70 centigrade. Avoid repeated freezing and thawing cycles.
Concentration	0.5mg/ml (determined by Absorbance at 280nm)

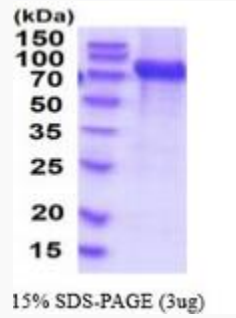
GENE INFORMATION

Gene Name	VCAM1 vascular cell adhesion molecule 1 [Homo sapiens]
Official Symbol	VCAM1
Synonyms	VCAM1; vascular cell adhesion molecule 1; vascular cell adhesion protein 1; CD106; CD106 antigen; INCAM-100; MGC99561; DKFZp779G2333;
Gene ID	7412
mRNA Refseq	NM_001078
Protein Refseq	NP_001069
MIM	192225
UniProt ID	P19320

 Tel: 1-631-559-9269 1-516-512-3133

 Email: info@creative-biomart.com  Fax: 1-631-938-8127

 45-1 Ramsey Road, Shirley, NY 11967, USA



 Tel: 1-631-559-9269 1-516-512-3133

 Email: info@creative-biomart.com  Fax: 1-631-938-8127

 45-1 Ramsey Road, Shirley, NY 11967, USA