

Active Recombinant Human VCAM1, Fc-tagged

Cat. No. VCAM1-71H Lot. No. (See product label)

SPECIFICATION

Product Overview	Active Recombinant Human VCAM1(Met 1-Pro 697)(NP_001069.1) was expressed in Human Cells with the Fc region of human IgG1 at the C-terminus.
Species	Human
Source	Human Cells
ProteinLength	1-697 aa
Form	Lyophilized from sterile 100mM Glycine, 10mM NaCl, 50mM Tris, pH 7.5.
Bio-activity	Measured by the ability of the immobilized protein to support the adhesion of U937 human histiocytic lymphoma cells. When cells are added to VCAM1 coated plates (10 µg/mL, 100 µL/well) approximately > 70% cells will adhere for 1 hour incubation at 37°C.
Molecular Mass	The recombinant human VCAM1/Fc is a disulfide-linked homodimeric protein. The reduced monomer consists of 911 amino acids and has a predicted molecular mass of 101 kDa. As a result of glycosylation, the rh VCAM1/Fc monomer migrates as an approximately 130-140 kDa band in SDS-PAGE under reducing conditions.
Endotoxin	< 1.0 EU per µg of the protein as determined by the LAL method.
Purity	> 95 % as determined by SDS-PAGE

 Tel: 1-631-559-9269 1-516-512-3133

 Email: info@creative-biomart.com  Fax: 1-631-938-8127

 45-1 Ramsey Road, Shirley, NY 11967, USA

Storage Store it under sterile conditions at -20°C to -80°C upon receiving. Recommend to aliquot the protein into smaller quantities for optimal storage. Avoid repeated freeze-thaw cycles.

Reconstitution It is recommended that sterile water be added to the vial to prepare a stock solution of 0.2 ug/ul. Centrifuge the vial at 4°C before opening to recover the entire contents.

GENE INFORMATION

Gene Name [VCAM1 vascular cell adhesion molecule 1 \[Homo sapiens \]](#)

Official Symbol [VCAM1](#)

Synonyms VCAM1; vascular cell adhesion molecule 1; vascular cell adhesion protein 1; CD106; CD106 antigen; INCAM-100; MGC99561; DKFZp779G2333;

Gene ID [7412](#)

mRNA Refseq [NM_001078](#)

Protein Refseq [NP_001069](#)

MIM [192225](#)

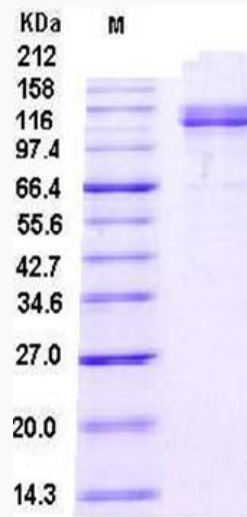
UniProt ID [P19320](#)

 Tel: 1-631-559-9269 1-516-512-3133

 Email: info@creative-biomart.com  Fax: 1-631-938-8127

 45-1 Ramsey Road, Shirley, NY 11967, USA

SDS-PAGE



 Tel: 1-631-559-9269 1-516-512-3133

 Email: info@creative-biomart.com  Fax: 1-631-938-8127

 45-1 Ramsey Road, Shirley, NY 11967, USA