

Recombinant Human VCL Protein, Myc/DDK-tagged, C13 and N15-labeled

Cat. No. VCL-1302H **Lot. No.** (See product label)

SPECIFICATION

Product Overview	VCL MS Standard C13 and N15-labeled recombinant protein (NP_003364) with a C-terminal MYC/DDK tag, was expressed in HEK293 cells.
Species	Human
Source	HEK293
Description	Vinculin is a cytoskeletal protein associated with cell-cell and cell-matrix junctions, where it is thought to function as one of several interacting proteins involved in anchoring F-actin to the membrane. Defects in VCL are the cause of cardiomyopathy dilated type 1W. Dilated cardiomyopathy is a disorder characterized by ventricular dilation and impaired systolic function, resulting in congestive heart failure and arrhythmia. Multiple alternatively spliced transcript variants have been found for this gene, but the biological validity of some variants has not been determined.
Molecular Mass	116.7 kDa
AA Sequence	MPVFHTRTIESILEPVAQQISHLVIMHEEGEVDGKAIPDLTAPVAAVQAAVSNLVRVG KETVQTTEDQILKRDMPPAFIKVENACTKLVQAAQMLQSDPYSVPARDYLIDGSRGIL SGTSDLLLTDFDEAEVRKIIRVCKGILEYLTVAEVVETMEDLVTYTKNLGPGMTKMAKM IDERQQELTHQEHRVMLVNSMNTVKELLPVLISAMKIFVTTKNSKNQGIEEALKNRNF TLEKMSAEINEIIRVLQLTSWDEDAWASKDTEAMKRALASIDSKLNQAKGWLDRDPSA SPGDAGEQAIRQILDEAGKVGELCAGKERREILGTCKMLGQMTDQVADLRARGQGS

 Tel: 1-631-559-9269 1-516-512-3133

 Email: info@creative-biomart.com  Fax: 1-631-938-8127

 45-1 Ramsey Road, Shirley, NY 11967, USA

SPVAMQKAQQVSQGLDVLTAKVENAARKLEAMTNSKQSIAKKIDAAQNWLADPNG
 GPEGEEQIRGALAEARKIAELCDDPKERDDILRSLGEISALTSKLADLRRQGGKGDSP
 ARALAKQVATALQNLQTKTNRAVANSRPAKAAVHLEGKIEQAQRWIDNPTVDDRGV
 GQAIRGLVAEGHRLANVMMGPYRQDLLAKCDRVDQLTAQLADLAARGESESPQA
 RALASQLQDSLKDLKARMQEAMTQEVSDFSDTTTPIKLLAVAATAPPDAPNREEVF
 DERAANFENHSGKLGATAEKAAAVGTANKSTVEGIQASVKTARELTPQVVSAARILL
 RNPGNQAAYEHFETMKNQWIDNVEKMTGLVDEAIDTKSLLDASEEAIKKDLKCKVA
 MANIQPQMLVAGATSIARRANRILLVAKREVENSEDPKFREAVKAASDELSKTISPMV
 MDAKAVAGNISDPGLQKSFLDSGYRILGAVAKVREAFQPQEPDFPPPPDLEQLRLT
 DELAPPKPLPEGEVPPRPPPEEKDEEFPEQKAGEVINQPMMAARQLHDEAR
 KWSSKGNIIAAAKRMALLMAEMSRLVRGGSGTKRALIQCAKDIAKASDEVTRLAKE
 VAKQCTDKRIRTNLLQVCERIPTISTQLKILSTVKATMLGRTNISDEESEQATEMLVHN
 AQNMQSVKQTVREAEASIKIRTDAGFTLRWVRKTPWYQTRTRPLEQKLISEEDLA
 ANDILDYKDDDDKV

Purity > 80% as determined by SDS-PAGE and Coomassie blue staining

Stability Stable for 3 months from receipt of products under proper storage and handling conditions.

Storage Store at -80 centigrade. Avoid repeated freeze-thaw cycles.

Concentration 50 µg/mL as determined by BCA

Storage Buffer 100 mM glycine, 25 mM Tris-HCl, pH 7.3.

GENE INFORMATION

Gene Name VCL vinculin [Homo sapiens (human)]

Official Symbol VCL

 Tel: 1-631-559-9269 1-516-512-3133

 Email: info@creative-biomart.com  Fax: 1-631-938-8127

 45-1 Ramsey Road, Shirley, NY 11967, USA

Synonyms VCL; vinculin; metavinculin; MVCL; CMD1W; CMH15;

Gene ID 7414

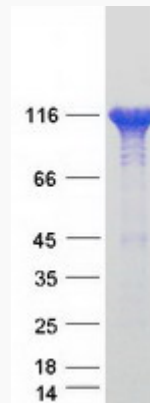
mRNA Refseq NM_003373

Protein Refseq NP_003364

MIM 193065

UniProt ID P18206

SDS-PAGE



 Tel: 1-631-559-9269 1-516-512-3133

 Email: info@creative-biomart.com  Fax: 1-631-938-8127

 45-1 Ramsey Road, Shirley, NY 11967, USA