

Recombinant Human VCL protein, GST-tagged

Cat. No. VCL-3709H **Lot. No.** (See product label)

SPECIFICATION

Product Overview	Recombinant Human VCL protein(777-1066 aa), fused with N-terminal GST tag, was expressed in E.coli.
Species	Human
Source	E.coli
ProteinLength	777-1066 aa
Form	The purified protein was Lyophilized from sterile PBS (58mM Na ₂ HPO ₄ , 17mM NaH ₂ PO ₄ , 68mM NaCl, pH8.0). 5 % trehalose and 5 % mannitol are added as protectant before lyophilization.
AASequence	PKFREAVKAASDELSTISPMVMDAKAVAGNISDPGLQKSFLDSGYRILGAVAKVRE AFQPQEPDFPPPPDLEQLRLTDELAPPKPLPEGEVPPPPPPPEEKDEEFPEQK AGEVINQPMMAARQLHDEARKWSSKGNIIAAAKRMALLMAEMSRLVRGGSGTK RALIQCAKDIAKASDEVTRLAKEVAKQCTDKRIRTNLLQVCERIPTISTQLKILSTVKAT MLGRTNISDEESEQATEMLVHNAQNLMSVKETVREAEAASIKIRTDAGFTLRWVRK TPWYQ
Purity	75%, by SDS-PAGE with Coomassie Brilliant Blue staining.
Storage	Store at 2-8°C for 1-2 weeks. Aliquot and store at -20°C to -80°C for up to 3 months, reconstitution with sterile water and addition of an equal volume of glycerol. Avoid repeat freeze-thaw cycles.

 Tel: 1-631-559-9269 1-516-512-3133

 Email: info@creative-biomart.com  Fax: 1-631-938-8127

 45-1 Ramsey Road, Shirley, NY 11967, USA

Reconstitution

Dissolve the product in 200 µl sterile water to achieve a working concentration of 0.25 g/µl. If experimental compatibility allows, mix the aqueous solution with an equal volume of glycerol (1:1 ratio) after initial reconstitution.

GENE INFORMATION

Gene Name	VCL vinculin [Homo sapiens]
Official Symbol	VCL
Synonyms	VCL; vinculin; metavinculin; MVCL; CMD1W; CMH15;
Gene ID	7414
mRNA Refseq	NM_003373
Protein Refseq	NP_003364
MIM	193065
UniProt ID	P18206

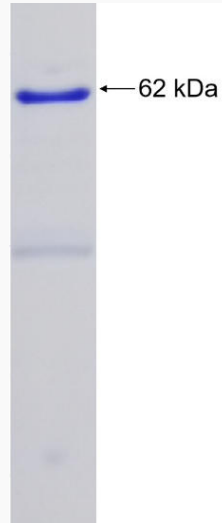
 Tel: 1-631-559-9269 1-516-512-3133

 Email: info@creative-biomart.com  Fax: 1-631-938-8127

 45-1 Ramsey Road, Shirley, NY 11967, USA



SDS-PAGE



Tel: 1-631-559-9269 1-516-512-3133

Email: info@creative-biomart.com Fax: 1-631-938-8127

45-1 Ramsey Road, Shirley, NY 11967, USA