

# Recombinant Full Length Rat VCL Protein, His-tagged, Biotin Labeled

**Cat. No.** VCL-6507RB    **Lot. No.** (See product label)

## SPECIFICATION

<b>Product Overview</b>	Biotinylated recombinant Full Length Rat VCL Protein with His tag was expressed in HEK293.
<b>Species</b>	Rat
<b>Source</b>	HEK293
<b>ProteinLength</b>	1-1066 aa
<b>Conjugation/Label</b>	Biotin
<b>Description</b>	Enables small GTPase binding activity. Predicted to be involved in several processes, including cell-cell junction assembly; platelet aggregation; and protein localization to cell surface. Predicted to act upstream of or within axon extension; lamellipodium assembly; and regulation of cell migration. Located in several cellular components, including Z disc; actin cytoskeleton; and focal adhesion. Human ortholog(s) of this gene implicated in dilated cardiomyopathy; dilated cardiomyopathy 1W; hypertrophic cardiomyopathy; and hypertrophic cardiomyopathy 15. Orthologous to human VCL (vinculin).
<b>Molecular Mass</b>	118 kDa
<b>AASequence</b>	MPVFHTRTIESILEPVAQQISHLVIMHEEGEVDGKAIPDLTAPVAAVQAAVSNLVRVG KETVQTTEDQILKRDMPPAFIKVENACTKLVQAAQMLQSDPYSPARDYLIDGSRGIL

 Tel: 1-631-559-9269    1-516-512-3133

 Email: [info@creative-biomart.com](mailto:info@creative-biomart.com)     Fax: 1-631-938-8127

 45-1 Ramsey Road, Shirley, NY 11967, USA

SGTSDLLLTDFDEAEVRKIIRVCKGILEYLTVAEUVETMEDLVITYTKNLGPGMTKMAKM  
 IDERQQELTHQEHRVMLVNSMNTVKELLPVLISAMKIFVTTKNSKNQGIEEALKNRNF  
 TVGKMSAEINEIIRVLQLTSWDEDAWASKDTEAMKRALASIDSKLNQAKGWLDPNA  
 SPGDAGEQAIRQILDEAGKVGELCAGKERREILGTCKMLGQMTDQVADLRARGQGA  
 SPVAMQKAQQVSQGLDVLTAKVENAARKLEAMTNSKQSIAKKIDAAQNWLADPNG  
 GPEGEEQIRGALAEARKIAELCDDPKERDDILRSLGEIAALTSKLGDLRRQGKGSPE  
 ARALAKQVATALQNLQTKTNRAVANSRPAKAAVHLEGKIEQAQRWIDNPTVDDRGV  
 GQAAIRGLVAEGHRLANVMMGPYRQDLLAKCDRVDQLAAQLADLAARGEESPQA  
 RALASQLQDSLKDLKTQMQEAMTQEVSDFSDTTTPIKLLAVAATAPPDAPNREEVF  
 DERAANFENHSGRLGATAEKAAAVGAANKSTVEGIQASVKTARELTPQVISAARILLR  
 NPGNQAAEYEHFETMKNQWIDNVEKMTGLVDEAIDTKSLLDASEEAIKKDLKCKVA  
 MANIQPQMLVAGATSIARRANRILLVAKREVENSEDPKFREAVKAASDELSKTISPMV  
 MDAKAVAGNISDPGLQKSFLDSGYRILGAVAKVREAFQPQEPDFPPPPDLEQLRLT  
 DELAPPKPLPEGEVPPRPPPEEKDEEFPEQKAGEVINQPMMAARQLHDEAR  
 KWSSKGNIIAAAKRMALLMAEMSRLVRGGSGTKRALIQCAKDIAKASDEVTRLAKE  
 VAKQCTDKRIRTNLLQVCERIPTISTQLKILSTVKATMLGRTNISDEESEQATEMLVHN  
 AQNLMQSVKETVREAEAAASIKIRTDAGFTLRWVRKTPWYQDYKDDDDKHHHHHHH  
 H

<b>Labeling Efficiency</b>	8.43 by HABA
<b>Endotoxin</b>	< 1 EU/μg by LAL
<b>Purity</b>	>90% by SDS-PAGE
<b>Storage</b>	Store it under sterile conditions at -20 to -80 centigrade. It is recommended that the protein be aliquoted for optimal storage. Avoid repeated freeze-thaw cycles.
<b>Storage Buffer</b>	Sterile PBS, pH7.4

 Tel: 1-631-559-9269 1-516-512-3133

 Email: [info@creative-biomart.com](mailto:info@creative-biomart.com)  Fax: 1-631-938-8127

 45-1 Ramsey Road, Shirley, NY 11967, USA

**Concentration** 0.82 mg/mL by BCA

## GENE INFORMATION

**Gene Name** Vcl vinculin [ *Rattus norvegicus* (Norway rat) ]

**Official Symbol** Vcl

**Synonyms** Vcl; vinculin; vinculin; metavinculin

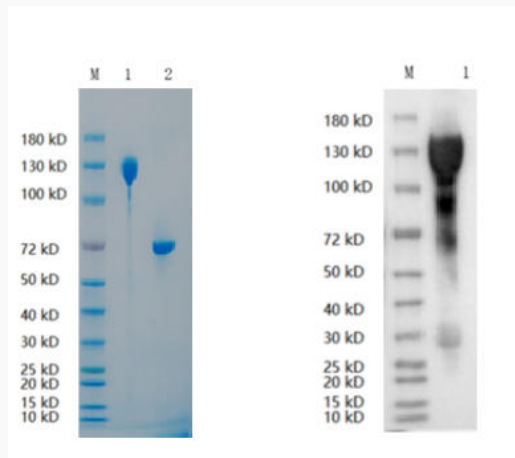
**Gene ID** 305679

**mRNA Refseq** NM\_001107248

**Protein Refseq** NP\_001100718

**UniProt ID** R9PXU6

### SDS-PAGE (CBB stained) and WB



Reducing 4%-20% SDS-PAGE (CBB stained) and WB (Anti-His Mouse Monoclonal antibody) analysis profiles of purified VCL. 1. VCL: 1

Tel: 1-631-559-9269 1-516-512-3133

Email: [info@creative-biomart.com](mailto:info@creative-biomart.com) Fax: 1-631-938-8127

45-1 Ramsey Road, Shirley, NY 11967, USA



µg 2. BSA: 1 µg

 Tel: 1-631-559-9269 1-516-512-3133

 Email: [info@creative-biomart.com](mailto:info@creative-biomart.com)  Fax: 1-631-938-8127

 45-1 Ramsey Road, Shirley, NY 11967, USA