

## Recombinant Human VCL Protein (Lys1020-Gln1134), N-His tagged

Cat. No. VCL-6549H Lot. No. (See product label)

### SPECIFICATION

<b>Product Overview</b>	Recombinant human VCL (Lys1020-Gln1134) fused with the N-His tag was expressed in E. coli.
<b>Species</b>	Human
<b>Source</b>	E.coli
<b>ProteinLength</b>	Lys1020-Gln1134
<b>Form</b>	Lyophilized powder/frozen liquid
<b>Molecular Mass</b>	15.39 kDa
<b>Purity</b>	> 90 % as determined by SDS-PAGE
<b>Notes</b>	For research use only.
<b>Storage</b>	Use a manual defrost freezer and avoid repeated freeze thaw cycles. Store at 2 to 8 centigrade for one week. Store at -20 to -80 centigrade for twelve months from the date of receipt.
<b>Storage Buffer</b>	0.01M PBS, pH 7.4, 0.02 % NLS
<b>Reconstitution</b>	Reconstitute in sterile water for a stock solution.

 Tel: 1-631-559-9269 1-516-512-3133

 Email: [info@creative-biomart.com](mailto:info@creative-biomart.com)  Fax: 1-631-938-8127

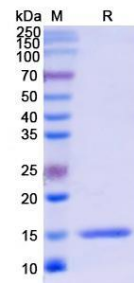
 45-1 Ramsey Road, Shirley, NY 11967, USA

**Shipping**

They are shipped out with dry ice/blue ice unless customers require otherwise.

**GENE INFORMATION**

<b>Gene Name</b>	VCL vinculin [ Homo sapiens (human) ]
<b>Official Symbol</b>	VCL
<b>Synonyms</b>	VCL; vinculin; metavinculin; MVCL; CMD1W; CMH15;
<b>Gene ID</b>	7414
<b>mRNA Refseq</b>	NM_003373
<b>Protein Refseq</b>	NP_003364
<b>MIM</b>	193065
<b>UniProt ID</b>	P18206

**SDS-PAGE**


 Tel: 1-631-559-9269 1-516-512-3133

 Email: [info@creative-biomart.com](mailto:info@creative-biomart.com)  Fax: 1-631-938-8127

 45-1 Ramsey Road, Shirley, NY 11967, USA