

Active Recombinant Human VEGFA protein

Cat. No. VEGFA-210H Lot. No. (See product label)

SPECIFICATION

Product Overview	Active Recombinant Human VEGFA protein(P15692-3) (Met 1-Arg 209) was expressed in Insect Cells.
Species	Human
Source	Insect Cells
ProteinLength	1-209 aa
Form	Lyophilized from sterile PBS, pH 7.4.
Bio-activity	Measured in a cell proliferation assay using human umbilical vein endothelial cells(HUVEC) (Conn, G. et al. 1990, Proc. Natl. Acad. Sci. USA 87:1323.). The ED50 for this effect is typically 10-50 ng/ml.
Molecular Mass	The recombinant human VEGF consists of 183 amino acids and has a predicted molecular mass of 21 kDa. The apparent molecular mass of the human VEGF183 is approximately 25-27 kDa in SDS-PAGE under reducing conditions.
Endotoxin	< 1.0 EU per µg of the protein as determined by the LAL method.
Purity	> 97 % as determined by SDS-PAGE and SEC-HPLC Analysis.
Storage	Store it under sterile conditions at -20°C to -80°C upon receiving. Recommend to aliquot the protein into smaller quantities for optimal storage. Avoid repeated freeze-

 Tel: 1-631-559-9269 1-516-512-3133

 Email: info@creative-biomart.com  Fax: 1-631-938-8127

 45-1 Ramsey Road, Shirley, NY 11967, USA

thaw cycles.

Reconstitution

It is recommended that sterile water be added to the vial to prepare a stock solution of 0.2 ug/ul. Centrifuge the vial at 4°C before opening to recover the entire contents.

GENE INFORMATION

Gene Name VEGFA vascular endothelial growth factor A [Homo sapiens]

Official Symbol VEGFA

Synonyms VEGFA; vascular endothelial growth factor A; vascular endothelial growth factor, VEGF; VEGF A; VPF; vascular permeability factor; VEGF; MVCD1; MGC70609;

Gene ID 7422

mRNA Refseq NM_001025366

Protein Refseq NP_001020537

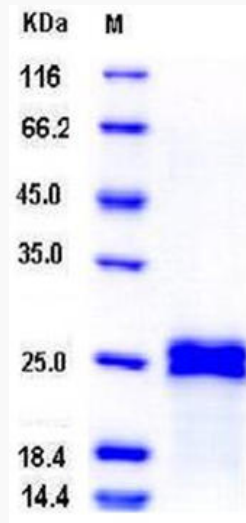
UniProt ID P15692

 Tel: 1-631-559-9269 1-516-512-3133

 Email: info@creative-biomart.com  Fax: 1-631-938-8127

 45-1 Ramsey Road, Shirley, NY 11967, USA

SDS-PAGE



 Tel: 1-631-559-9269 1-516-512-3133

 Email: info@creative-biomart.com  Fax: 1-631-938-8127

 45-1 Ramsey Road, Shirley, NY 11967, USA