

Active Recombinant Human VEGFA protein

Cat. No. VEGFA-2570H **Lot. No.** (See product label)

SPECIFICATION

Product Overview	Active Recombinant Human VEGF-A/VEGF121(K321N) Protein is produced by E. coli expression system. The target protein is expressed with sequence (Ala207-Arg327 (Lys321Asn)) of human VEGF121 (Accession #NP_001020541.2).
Species	Human
Source	E.coli
ProteinLength	Ala207-Arg327 (Lys321Asn)
Form	Lyophilized from a 0.22 µm filtered solution of PBS, pH 7.4.
Bio-activity	1.Measured by its binding ability in a functional ELISA. Immobilized Human VEGF121 at 2 µg/mL (100 µL/well) can bind Human KDR with a linear range of 0.2-10 ng/mL. 2.Measured in a cell proliferation assay using human umbilical vein endothelial cells (HUVEC). The ED50 for this effect is typically 0.017-0.068 ng/mL.
Molecular Mass	18 kDa
Endotoxin	< 0.1 EU/µg of the protein by LAL method.
Purity	> 97% by SDS-PAGE.
Storage	Store the lyophilized protein at -20°C to -80 °C for long term. After reconstitution, the protein solution is stable at -20 °C for 3 months, at 2-8 °C for

 Tel: 1-631-559-9269 1-516-512-3133

 Email: info@creative-biomart.com  Fax: 1-631-938-8127

 45-1 Ramsey Road, Shirley, NY 11967, USA

up to 1 week.

Reconstitution Reconstitute to a concentration of 0.1-0.5 mg/mL in sterile distilled water.

GENE INFORMATION

Gene Name VEGFA vascular endothelial growth factor A [Homo sapiens]

Official Symbol VEGFA

Synonyms VEGFA; vascular endothelial growth factor A; vascular endothelial growth factor , VEGF; VEGF A; VPF; vascular permeability factor; VEGF; MVCD1; MGC70609;

Gene ID 7422

mRNA Refseq NM_001025366

Protein Refseq NP_001020537

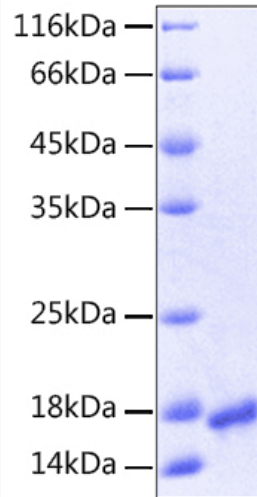
UniProt ID P15692

 Tel: 1-631-559-9269 1-516-512-3133

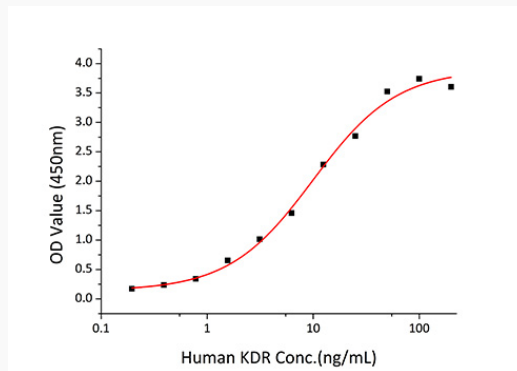
 Email: info@creative-biomart.com  Fax: 1-631-938-8127


 45-1 Ramsey Road, Shirley, NY 11967, USA

SDS-PAGE




Bio-activity



 Tel: 1-631-559-9269 1-516-512-3133

 Email: info@creative-biomart.com  Fax: 1-631-938-8127

 45-1 Ramsey Road, Shirley, NY 11967, USA